

Met**STREAM** 100

User Manual

GILL

Data Solutions Platform

(Parts 1955-100-0X-XX)

Doc No: 1955-PS-0001

Issue 1



Gill Instruments Limited
Saltmarsh Park, 67 Gosport Street, Lymington,
Hampshire, SO41 9EG, UK
Tel: +44 1590 613500, Fax: +44 1590 613555
Email: anem@gillinstruments.com Website: www.gillinstruments.com

Contents

1.	FOREWORD.....	3
2.	INTRODUCTION.....	3
3.	SPECIFICATION	4
4.	PRE-INSTALLATION	6
4.1	Equipment supplied	6
4.2	MetStream 100 Part Numbers.	6
4.3	Packaging.....	7
4.4	Installation requirements.....	7
	4.4.1 Host system.....	7
	4.4.2 Software	7
	4.4.3 Cables	7
	4.4.4 Mounting	8
4.5	MetStream Connections.	8
	4.5.1 MetStream Front Panel Connectors.....	8
	4.5.2 Front Panel Status LED's.....	8
	4.5.3 Front Panel USB 2.0 Port	8
	4.5.4 MetStream Rear Panel Connectors.....	9
	4.5.5 Rear Panel Power Socket.....	9
	4.5.6 Rear Panel Ethernet Socket.....	9
	4.5.7 RS232/422/485 Connector.....	9
	4.5.8 Power enable function	10
5.	INSTALLATION.....	11
5.1	Installation Guidelines.....	11
	5.1.1 MetPak to MetStream Data Input Connection.....	11
	5.1.2 Ethernet to Ethernet Connection	12
	5.1.3 Cable length	13
	5.1.4 Ethernet Socket Cable Wiring	13
	5.1.5 Power supplies	14
	5.1.6 Power over Ethernet Connection.	14
5.2	Connections.....	14
	5.2.1 MetStream RS232 Digital Input Connections.....	15
	5.2.2 MetStream RS422 Digital Input Connections.....	15
	5.2.3 Mechanical installation.....	16
5.3	MetStream External Protection Box - Part 1955-PK-052.....	17
6.	METSTREAM GRAPHICAL USER INTERFACE.....	19
6.1	Opening the MetStream GUI using a PC and Ethernet Crossover Cable.....	19
	6.1.1 PC/Laptop Set Up using Gill MScan Discovery Software.....	19
	6.1.2 PC/Laptop Set Up if Gill MScan Discovery Software is not available.	21
6.2	Accessing the MetStream GUI using a PC and a Wi-Fi Router	23
6.3	Opening the MetStream GUI using a PC and a LAN Port Connection.	26
6.4	MetStream Front Page GUI Features.	28
6.5	MetStream Configuration (Administrator Use).....	32
	6.5.1 Login	32
	6.5.2 Exit/Reboot/Shutdown/Thru Mode/Logout.....	33
	6.5.3 Username and Password.....	34
	6.5.4 Date and Time.....	35
	6.5.5 Dashboard Settings (Administrator Use)	36
	6.5.6 Data Logging.....	37
	6.5.7 Input Device Settings.....	40
	6.5.8 Network Settings	43
	6.5.9 Weather Observation Website (WOW).....	44
	6.5.10 About.....	45

6.5.11	Thru Mode (Diagnostic Connection).....	46
7.	MAINTENANCE & FAULT-FINDING	51
7.1	Maintenance	51
7.2	Fault-finding.....	52
7.3	Returning Units.....	52
8.	APPENDICES.....	53
8.1	Glossary & Abbreviations.....	53
8.2	Guarantee.....	54
8.3	Electrical Conformity.....	55

1. FOREWORD

Thank you for purchasing the MetStream 100 manufactured by Gill Instruments Limited. To achieve optimum performance we recommend that you read the whole of this manual before proceeding with use.

Gill products are in continuous development and therefore specifications may be subject to change and design improvements without prior notice.

The information contained in this manual remains the property of Gill Instruments and should not be copied or reproduced for commercial gain.

2. INTRODUCTION

The Gill MetStream 100 is a robust unit which allows connection of a Gill Instruments MetPak Range Weather Station to its Digital input and with the use of its Ethernet Output allow Weather Data to be viewed and logged over a PC network.

The MetStream 100 can be used in conjunction with a Wireless Router, LAN or PC.

After you have successfully set up the MetStream 100, we strongly advise that you then go back and read the rest of the manual to ensure that you get the best results from the MetStream 100.

3. SPECIFICATION

MetStream 100 - Parts 1955-100-0X-XX

Input Power Requirement (MetStream only)

Voltage	9-30V DC
Current	167mA max@12V DC (2W) MetStream only 500mA max @ 12V DC, (6W max) including external sensor

Power over Ethernet Built-in receiver (IEEE 802.3af-2003)

Output Power

Voltage	Regulated 12V DC \pm 10%
Current	Up to 300mA @ 12V DC

Digital Input

Communication	ASCII, RS232, RS422/485 4 wire, full duplex
Baud rates	1200, 2400, 4800, 9600, 19200, 38400, 57600
Formats	8 data, odd, even or no parity
Data Input Rate	Up to 20Hz

Digital Output

Format	8P8C
Communication	Ethernet 10/100 BASE-T speeds/format

Internal Storage

Micro SD Card	4GB with operating system and enough storage to log 1Hz data for 1 month.
---------------	---

External Data Storage

USB 2.0 Port	Expansion port supplied for external USB Data Storage, max of 32GB supported.
--------------	---

Start Up Time

Data Ready	Less than 90 seconds (MetStream box) from power up.
------------	---

Dimensions

Size	112mm long, 111mm wide, 34mm deep.
Weight	0.26kg.

Materials

External Construction	Aluminium and Plastic
-----------------------	-----------------------

Environmental

Moisture protection	IP40 IP65 with optional Gill outdoor enclosure
Operating temperature	-20°C to +70°C
Storage temperature	-40°C to +80°C
Humidity	<5% to 95% RH
EMC	BS EN 55024:2010 BS EN 55022:2010
FCC	CFR47 Part 15B

Standards Traceable to UK national standards

MetStream Power Supply Unit - Part 026-04969

(Supplied with all MetStream Parts 1955-100-0X-XX)

Input Voltage Range	100v to 240V AC @ 300mA max (50/60Hz)
Mains Adaptors	UK, Euro, US and AUS types supplied.
Output Power	
Voltage	Regulated 12V DC \pm 2%
Current	Up to 1 Amp (over current and short circuit current protected).
DC Cord	1.5 metres long with right angled 2.1 C +ve plug.
Dimensions	
Size	79mm long x 55.4mm wide x 37mm deep.
Weight	150 grams.
Materials	
External Construction	Plastic, PB free ROHS compliant.
Environmental	
Operating temperature	0°C to +40°C
Storage temperature	-20°C to +60°C
Humidity	5% to 95% RH
EMC	BS EN 55024:2010 BS EN 55022:2010
FCC	CFR47 Part 15B
EMI	BS EN55022 FCC (Part 15 Class B)
SAFETY	UL60950-1

MetStream External Protection Box - Part 1955-PK-052

(Supplied with MetStream Part 1955-100-02-XX)

Dimensions	
Size	335mm long x 220mm wide x 107mm deep.
Weight	1.5kg
Maximum Cable size	5 x 2.5 mm sq.
Materials	
External Construction	Thermoplastic.
Environmental	
Moisture protection	IP65
Install Temperature	0°C to +40°C
Operating temperature	-20°C to +70°C

4. PRE-INSTALLATION

4.1 Equipment supplied

MetStream 100.

Universal Ac supply input, 12v dc 1A output supply.

2 Metre one to one Ethernet lead.

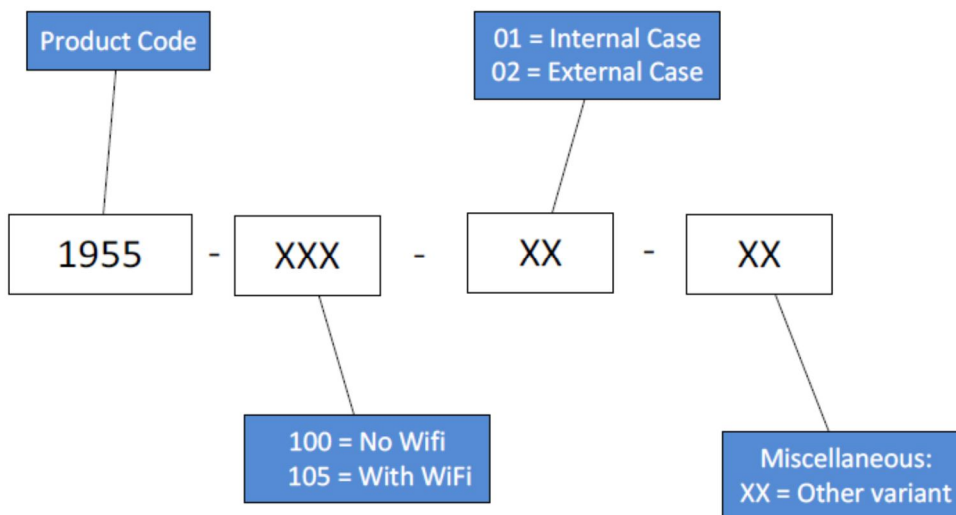
1 Metre crossover Ethernet lead.

MetStream IP address MScan Software, on the CD.

MetStream 100 User Manual on the CD (this manual).

MetPak terminal block 8-way connector

4.2 MetStream 100 Part Numbers.



Available spare parts and optional extras are as detailed below:-

Item	Part Number
MetStream 100 (Supplied unit).	1955-100-0X-XX
Mains powered 12v dc Power Supply (Supplied with MetStream).	026-04969
Ethernet Cable (one to one) 2 Metres long (Supplied with MetStream).	026-04970
Ethernet Crossover cable 1 Metre long (Supplied with MetStream).	026-05073
8 way Spring terminal block (Supplied with MetStream).	020-04277
External Protection Box (Supplied with part 1955-100-02-XX).	1955-PK-052

4.3 Packaging

Whilst the MetStream 100 is being moved to its installation site, the unit should be kept in its packaging. Retain the packaging for use if the unit has to be moved or returned to Gill Instruments.

4.4 Installation requirements

4.4.1 Host system

Select from the following:

- Router with Ethernet input.
Or
- Wi Fi Modem with Ethernet input.
Or.
- LAN Ethernet input.

Plus:-

- PC with Wi Fi or Ethernet input to view MetStream Data.
- Internet Browser (we recommend Firefox, Chrome or IE9.0 or later)
- Optional USB 2.0/3.0 data stick to export store logged data.
- Gill Instruments MetPak Range Unit set for ASCII, RS232, RS 422 output (see <http://www.gillinstruments.com/products/anemometer/weather-station-range.htm> for the range of MetPak units).

4.4.2 Software

- Gill MScan Software to detect the MetStream IP address.
 - Note MScan app works on Windows devices.

4.4.3 Cables

- **To connect MetStream to the host unit (e.g. MetStream 100 to a MetPak unit).**

Use a suitable RS232 or RS422/485 cable, there are restrictions on cable type and length for suitable operation, refer to the connecting equipment Manual.

- **To connect the MetStream 100 to an Ethernet port.**

Use a CAT 5 CAT5e or CAT 6 cable to connect between the MetStream 100 and the user interface equipment.

Ethernet cables of up to 100 metres can be supported.

A 2 Metre Ethernet test cable is supplied (non-crossover type).

- **To connect the MetStream 100 directly to a PC.**

Use a CAT 5 CAT5e or CAT 6 crossover cable to connect between the MetStream 100 and the PC Ethernet port.

Ethernet cables of up to 100 metres can be supported.

A 1 Metre Ethernet crossover test cable is supplied.

- **To connect DC power to the MetStream unit**

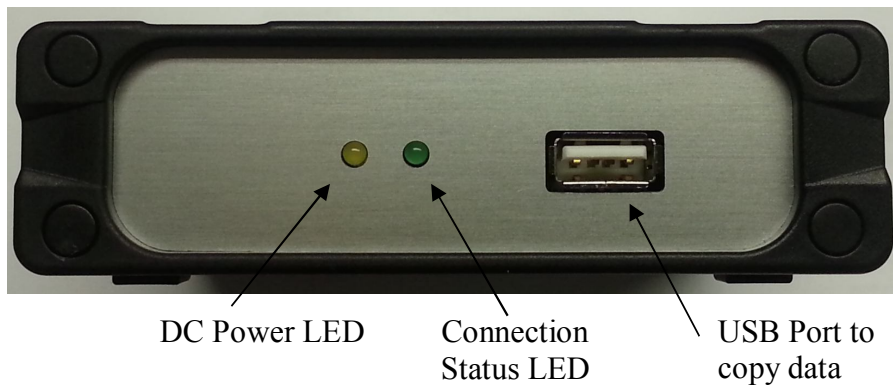
A 12v dc power supply and lead with wired connector are supplied otherwise use a cable suitable for connecting a dc supply of nominally 12v dc (1 amp recommended). If requiring full current then take into account volt drops if a long cable run is needed.

4.4.4 Mounting

- The MetStream 100 is designed for indoor use.
- The MetStream 100 can be positioned laid flat down or on its side.
- For outdoor use the unit should be enclosed in a box that provides the necessary sealing that will meet the outdoor climatic conditions. Gill instruments can provide an outdoor box if required part number 1955-PK-052.

4.5 MetStream Connections.

4.5.1 MetStream Front Panel Connectors



4.5.2 Front Panel Status LED's

The Yellow LED illuminated indicates DC Power is applied to the MetStream Box.
The Green LED illuminated indicates unit connecting/connected to a user unit.
A flashing Green LED means that MetStream is communicating with the connected instrument.

When power is applied to the MetStream with valid equipment wired to the RS232/422/485 connector the Green LED will be:-

- Off initially for approximately 10 seconds.
- On for approximately 20 seconds.
- Flash whilst correct communication (Comms Mode and Baud Rate) with the connected device is being established.
- On continuously when the connected instrument is recognised and data is ready to be read.

However allow up to 90 seconds for a valid connection to be established depending on equipment connected.

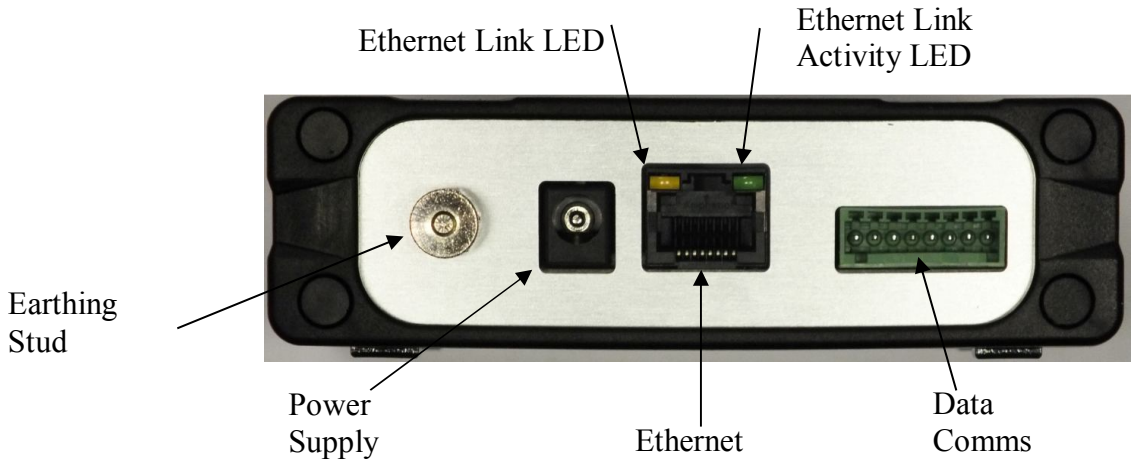
4.5.3 Front Panel USB 2.0 Port

Suitable for a USB data stick to copy files from MetStream only.

Maximum 32GB device supported.

Hot Pluggable.

4.5.4 MetStream Rear Panel Connectors



4.5.5 Rear Panel Power Socket

Two contact power socket	Use with 2.1mm x 5.5mm plug.
Voltage Range	9v to 30v dc.
Input Current	Up to 167mA @12V from MetStream. Up to 0.5A @12V, MetStream and external device.

4.5.6 Rear Panel Ethernet Socket

A standard Ethernet socket is provided for connecting:-

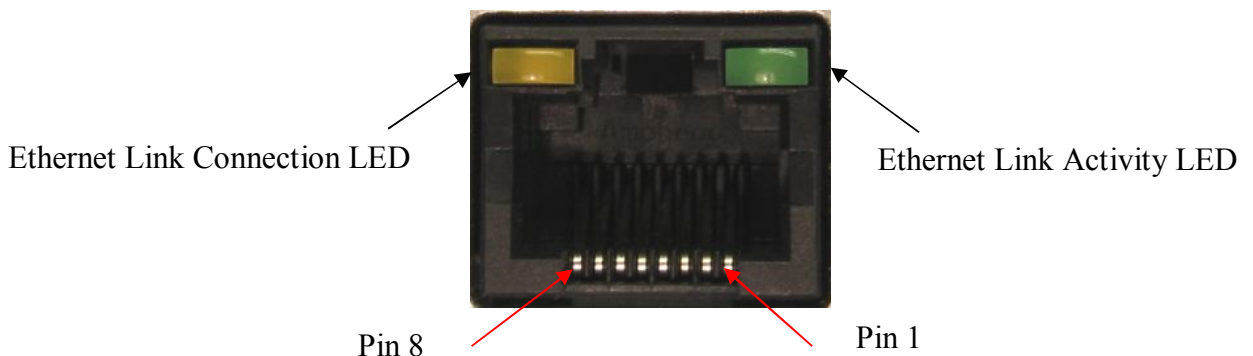
The supplied 2 metre Ethernet cable for a Local Area Network (LAN) connection

Or

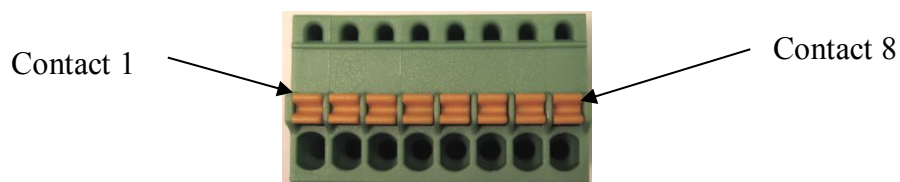
The 1 Metre Ethernet crossover cable for direct connection to a PC.

Other length Ethernet cables can be used:-

If there is a successful connection between the MetStream Ethernet socket and LAN then the Yellow Ethernet Socket LED's will be illuminated and the Green LED will indicate Data traffic activity.



4.5.7 RS232/422/485 Connector



A removable 8 way plug is supplied for the RS232/422/485 data input connections. The part number for the plug is Phoenix Contact 8 way spring terminal Part 1881383.

Connections to the RS232/422/485 connector are

CONTACT/ COMMS MODE	1	2	3	4	5	6	7	8
RS232	Rx+-	-	-	Tx-	+12v dc Output	Power Enable	0v	0v
RS422/485	Rx+	Tx+	Rx-	Tx-	+12V dc Output	Power Enable	0v	0v

Recommended range of wire gauges that can be used with the connector is 20 AWG to 28 AWG.

Wires connected to this plug should be stripped back 8 mm for insertion into the push/lock connector.

4.5.8 Power enable function

The +12v dc output is only enabled on Terminal 5 when the **Power Enable connection** on Terminal 6 is connected to Terminal 7 (0v) or Terminal 8 (0v).

If Terminal 6 **Power Enable** is left open circuit then the 12V supply output from Terminal 5, and any connected instrument using this supply, will be disabled.

In this case, the external instrument should be powered separately from the MetStream by a customer-provided supply.

5. INSTALLATION

NOTE: Warranty is void if the MetStream case is opened.

5.1 Installation Guidelines

- The MetStream 100 is designed for indoor use.
- For outdoor use a suitable sealed enclosure that meets the required environmental conditions can be used.
 - Gill instruments can supply an outdoor IP65 enclosure; refer to the technical specification in the front of this manual to ensure it meets the required conditions of use.
- Ensure the product is correctly earthed in accordance with this manual.
- Use cables recommended by Gill, keeping the length below the maximum allowed. Where the cables are cut and re-connected (junction boxes, plugs and sockets) the cable screen integrity where applicable must be maintained, to prevent the EMC performance being compromised.
- Earth loops should not be created – earth the system in accordance with the installation guidelines.
- Ensure the power supply operates to the MetStream 100 specification at all times.

Bench system test

Note: Prior to physically mounting the MetStream 100 in its final location, we strongly recommend that a bench system test be carried out to confirm the system is configured correctly, is fully functional and electrically compatible with the selected host system and cabling (preferably utilising the final cable length). The required data format, units and other options should also all be configured at this stage.

5.1.1 MetPak to MetStream Data Input Connection

The following table shows an example manufacturers' reference; other manufacturers' equivalents can be used.

Recommended Belden cable types

Application	No. of Pairs	Belden Ref.
Digital RS232	3	9503
Digital RS422	4	9504

For RS422 operation the cable should contain twisted pairs screened to match the application.

Cable length

The maximum cable length is dependent on the chosen communication method.

The following table shows the maximum cable lengths for the supported communication protocols at the given baud rates, using the recommended cable. If any problems of data corruption etc. are experienced, then a slower baud rate should be used. Alternatively, a higher specification cable can be tried.

Maximum cable lengths for supported communication networks

Communication format	Baud rate	Max. cable length
RS232	19200	6.5M
RS422	19200	1000M

Cabling (unused wires)

Any unused wires in the connecting cables should be connected to ground preferably at the user equipment end.

Cabling protection

Cables should be secured:-

With cable clamps or equivalent at regular intervals such that the hub box cable gland does not support the cable weight.

Away from any mounting bolts to prevent chaffing of the cable.

NOTE: Install appropriate strain relief support to the cable if required.

Earthing

To ensure correct operation and for maximum protection from lightning, a separate lightning rod system is recommended to protect the system.

You can also earth the MetPak through its mountings or by connecting a grounding cable to the MetPak Earth Terminal Post. Clean off any paint etc. that might prevent a good connection to the Earth structure.

When you connect the screened communications cable ensure that the screen has a connection to the MetStream Case.

5.1.2 Ethernet to Ethernet Connection

An Ethernet compatible cable should be used.

Generic description:–

2 Twisted pairs for Data only application.

4 twisted pairs for Data and Power over Ethernet (POE) applications.

CAT5 or higher RJ45.

8 pin 8 contact type (8P8C).

Max Cable Length 100 metres (Cat 5, Cat 5e, Cat 6).

Types - straight or crossover depending on system connection.

Shielded Twisted Pair (STP) recommended or Unshielded Twisted Pair (UTP).

The table below shows some set up cable options.

Cable type required for setup

	PC	Wi Fi Router	LAN
MetStream to:-	Crossover	Straight	Straight

5.1.3 Cable length

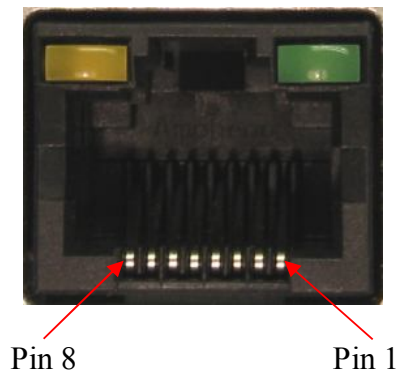
The typical maximum length at Ethernet 10Mbps data rate is 100 Metres, using the recommended cable.

If any problems of data corruption are experienced (due to, for example, a high local electrical ‘noise’ level), then check that a shielded Ethernet twisted pair cable is being used. Alternatively, a thicker or higher specification cable can be tried.

5.1.4 Ethernet Socket Cable Wiring

The rear Ethernet RJ45 socket on the MetStream unit has the following connections:-

10Base T Port Pin outs.



IEEE 802.3af connections using spare pairs for POE.

8 Pin ⁸	Description
1	Transmit+
2	Transmit -
3	Receive+
4	DC+
5	DC+
6	Receive -
7	DC-
8	DC-

Pins 4, 5, 7 and 8 are not used unless a Power over Ethernet connection is used. Ensure that a fully 8 wire populated cable is used for POE applications.

5.1.5 Power supplies

MetStream 100 units

Input Supply: -

Voltage	9v to 30v DC.
Current	167mA max@12v DC (excludes external USB flash drive and MetPak unit).
Current	500mA max@12v DC including external Sensor.

5.1.6 Power over Ethernet Connection.

It is possible to Supply Power to a MetStream 100 and connected MetPak unit for instance through the use of a Single Port MidSpan PoE Injector.

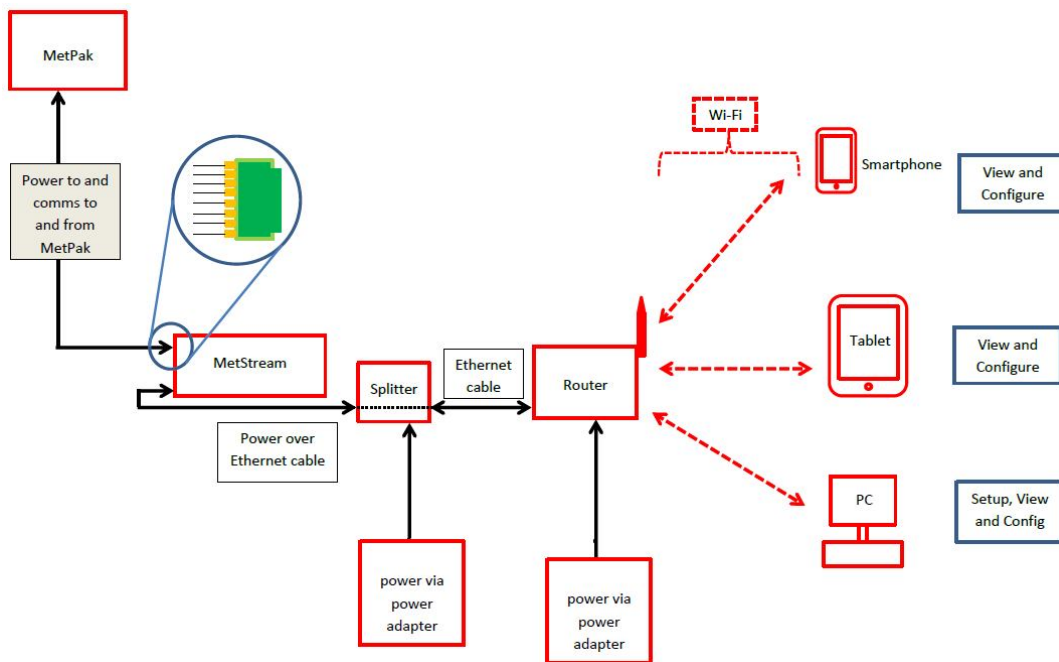
Typically the Power over Ethernet device will inject 48v dc on the Ethernet cable to connect to the MetStream 100 unit.

Typical 48v current capacity should be 350mA.

Maximum cable length between The POE injector and MetStream should be 100 Metres

Connect MetStream Ethernet lead to the Power and Data connection socket.

Typical MetStream System Connection using Power over Ethernet.



5.2 Connections

Important:- Any cable wires not used should be isolated and grounded at the terminating equipment/user end.

Digital OV should be used in conjunction with RS422 TX RX lines in order to improve noise immunity.

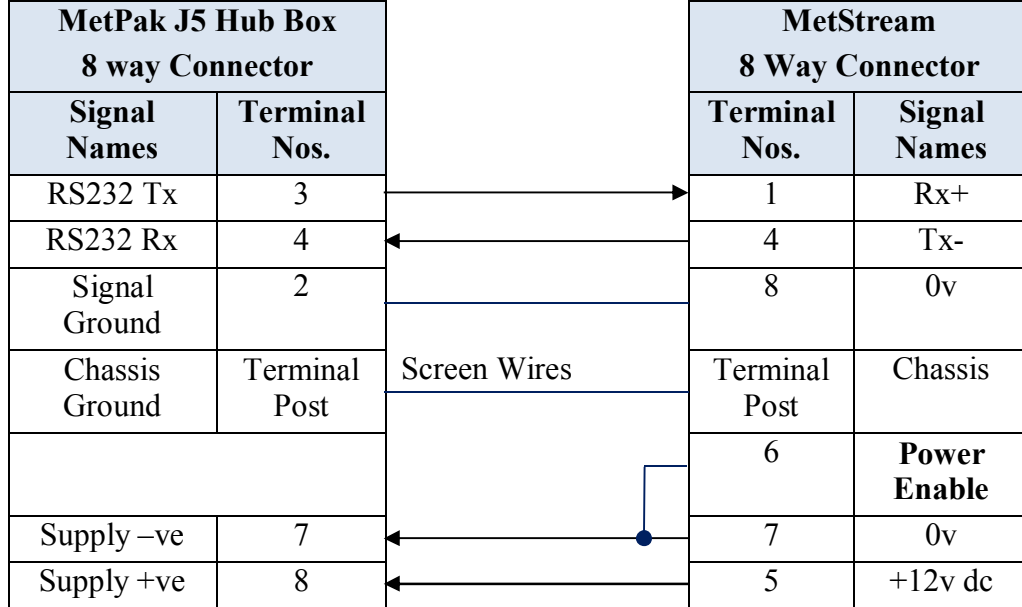
Earthing or grounding

It is recommended that MetStream metal case is grounded via its Knurled Screw Earth Terminal.

5.2.1 MetStream RS232 Digital Input Connections

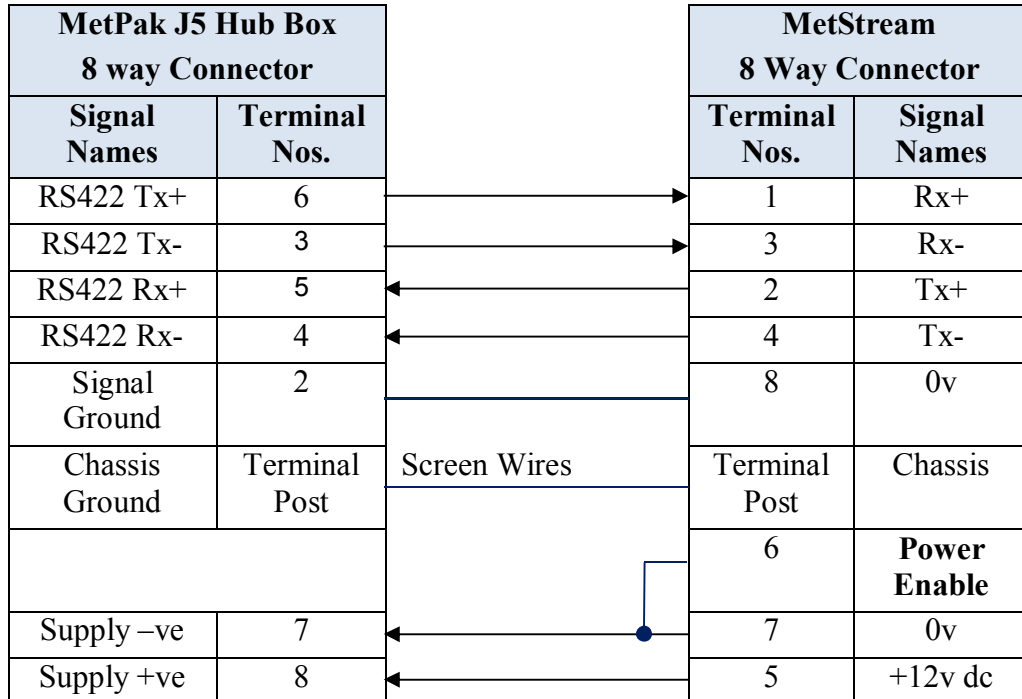
The following example shows a MetPak with its COMMS set for RS232 connected to MetStream. This is the MetPak default communication configuration setting.

NOTE: The 8 way connectors fitted to MetStream and Metpak are identical, take care when connecting the lead to the equipments to ensure that cable wiring matches that required of the connecting equipment.



5.2.2 MetStream RS422 Digital Input Connections

The following example shows a MetPak with its COMMS set for RS422 connected to MetStream. This is not the default MetPak communications setting; ensure the MetPak has been configured for this output requirement before wiring to MetStream.



5.2.3 Mechanical installation

Before installing, a bench system test is recommended.

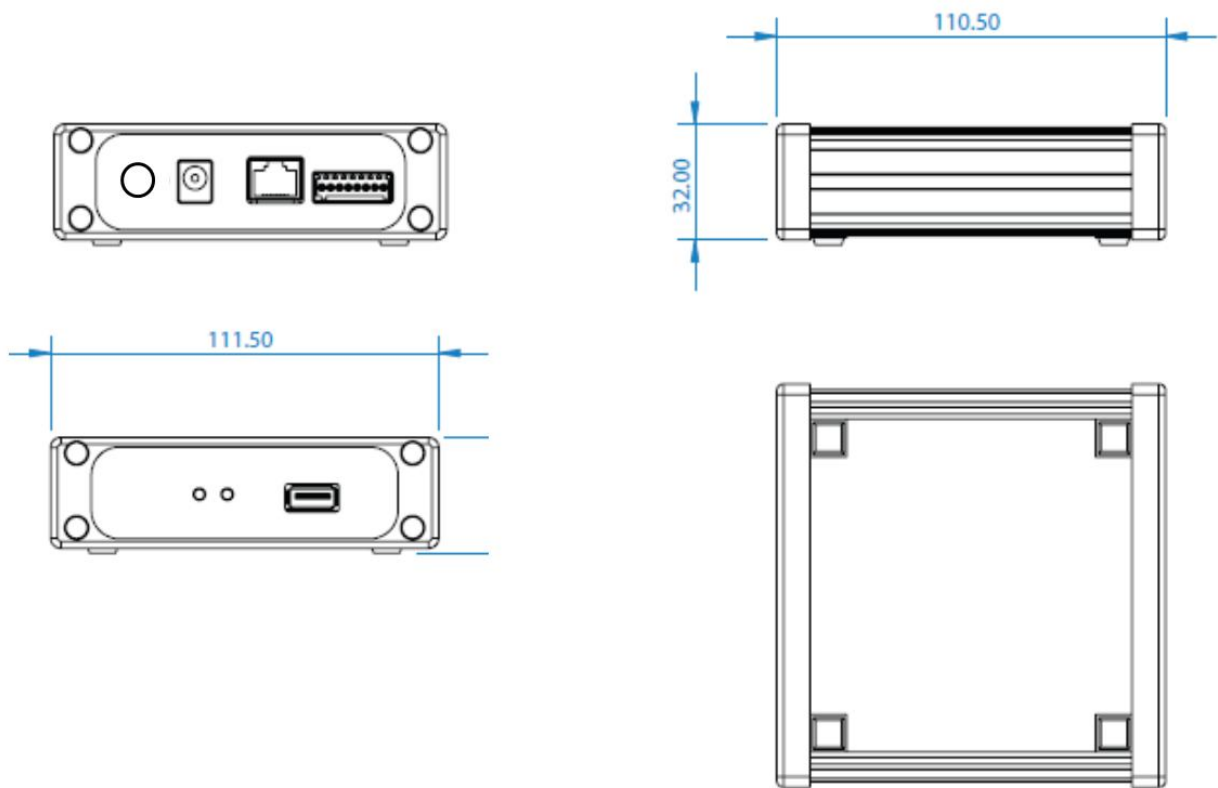
All the time the MetStream 100 is not in its final location, it should be protected from damage by keeping it in the original packaging as long as possible.

Location

It is advised to not site the MetStream 100 in close proximity of electrical noise, Radar or RF transmitters. A site survey may be required if there is any doubt about the strength of external electrical noise.

Orientation

The unit may be mounted in any orientation.



Dimensions are in mm

5.3 MetStream External Protection Box - Part 1955-PK-052

(Supplied with MetStream Part 1955-100-02-XX).

Note the environmental temperature conditions etc. under which the Protection Box and MetStream will be used to ensure there is no conflict (see manual Specification pages 4 and 5).

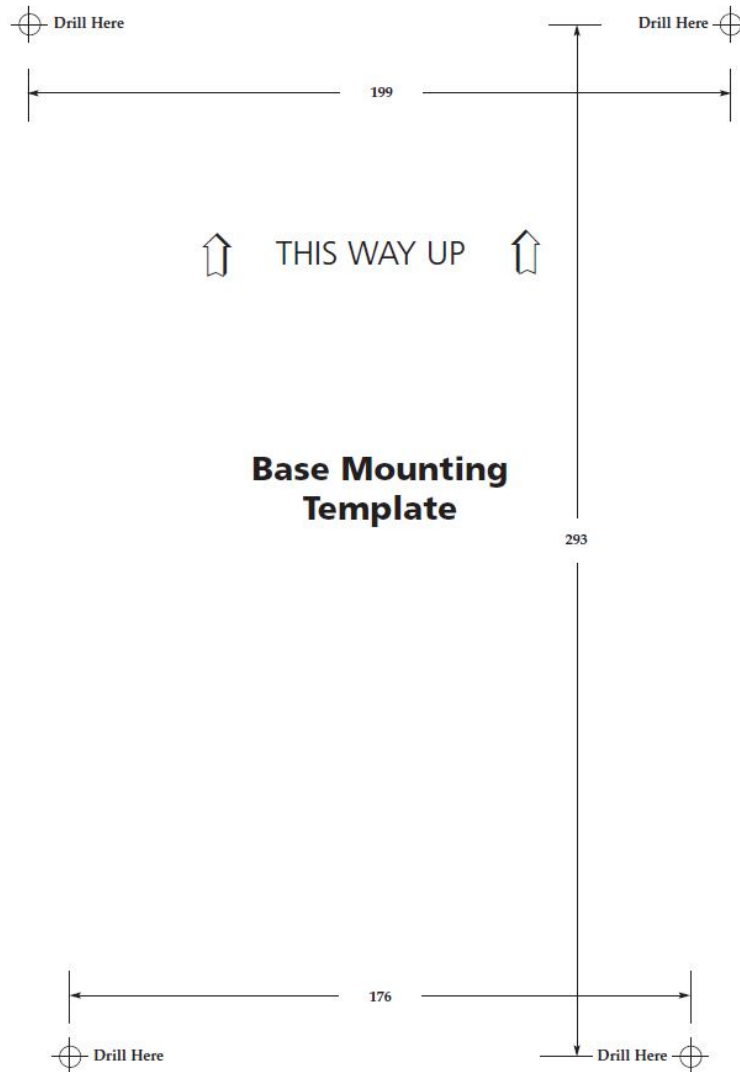
Outer Case Dimensions (with cover in place) 335mm long x 220mm wide x 107mm deep.

Case Preparation and Mounting

The case should be mounted on a vertical surface with cable entries at the bottom. The case should be mounted onto a flat surface to prevent twisting that could affect sealing.

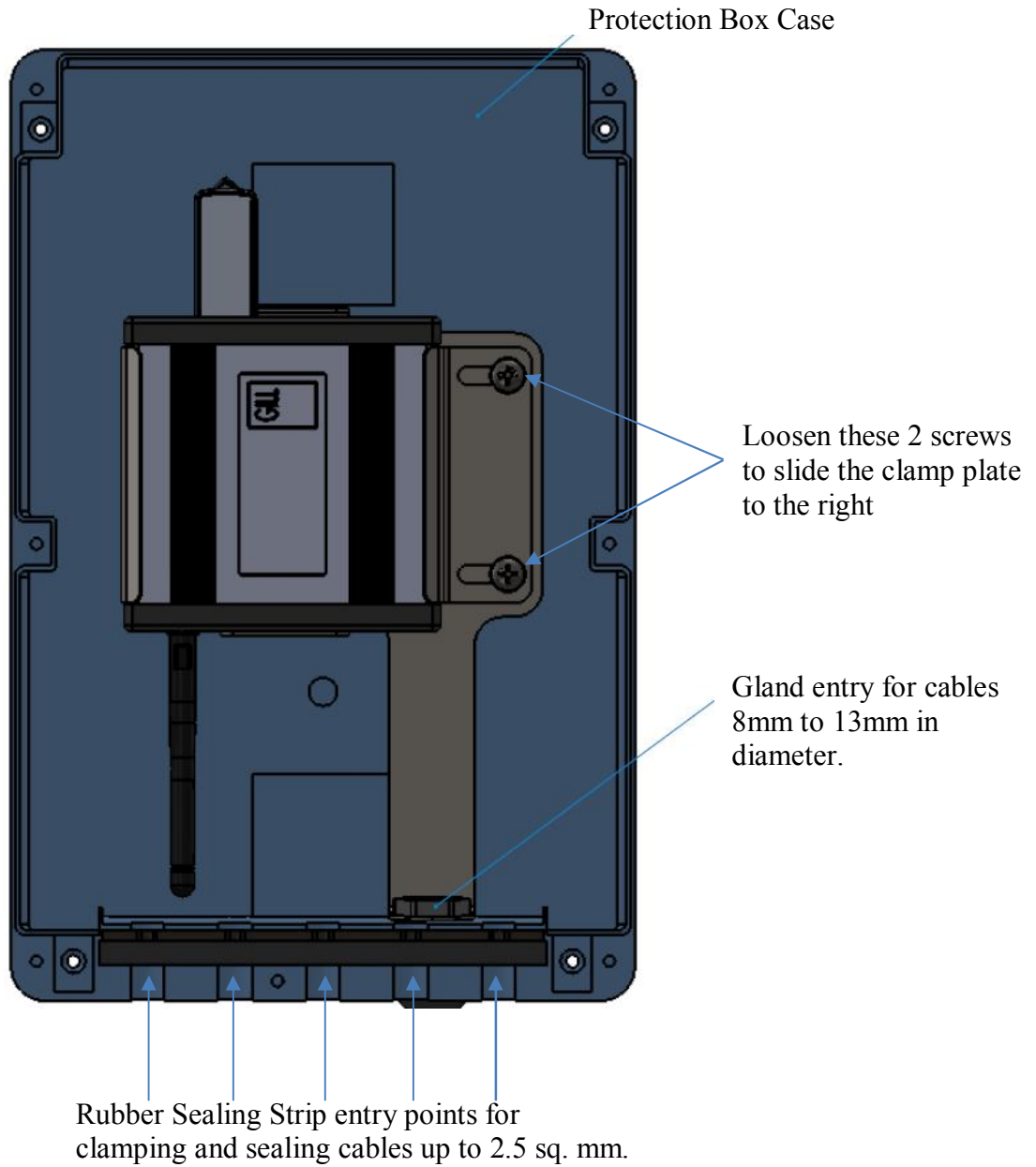
Do not drill any holes in the enclosure apart for those for waterproof glands as this could impair on the IP65 weather proof rating.

A template (not to scale) is shown to aid mounting hole positioning (units in mm).



To install the MetStream unit loosen the 2 Philips screws identified below, slide the clamp plate to the right.

Slide in the MetStream unit as shown and clamp in MetStream and tighten the 2 screws.



6. METSTREAM GRAPHICAL USER INTERFACE

The MetStream 100 output can be viewed in a Graphical User Interface (GUI) by connecting directly to a PC/Laptop or via a Wi Fi or Ethernet LAN connection and opening a Web Page (Internet Explorer 9 or Mozilla Firefox 19.0.2 are recommended, earlier versions may not be suitable). This then allows the user to view data and those with password access to retrieve logged data and change GUI settings.

Parts required:-

MetStream 100 and Power Supply (supplied).

Ethernet 1 metre crossover cable (supplied).

Ethernet 2 Metre non crossover cable (supplied).

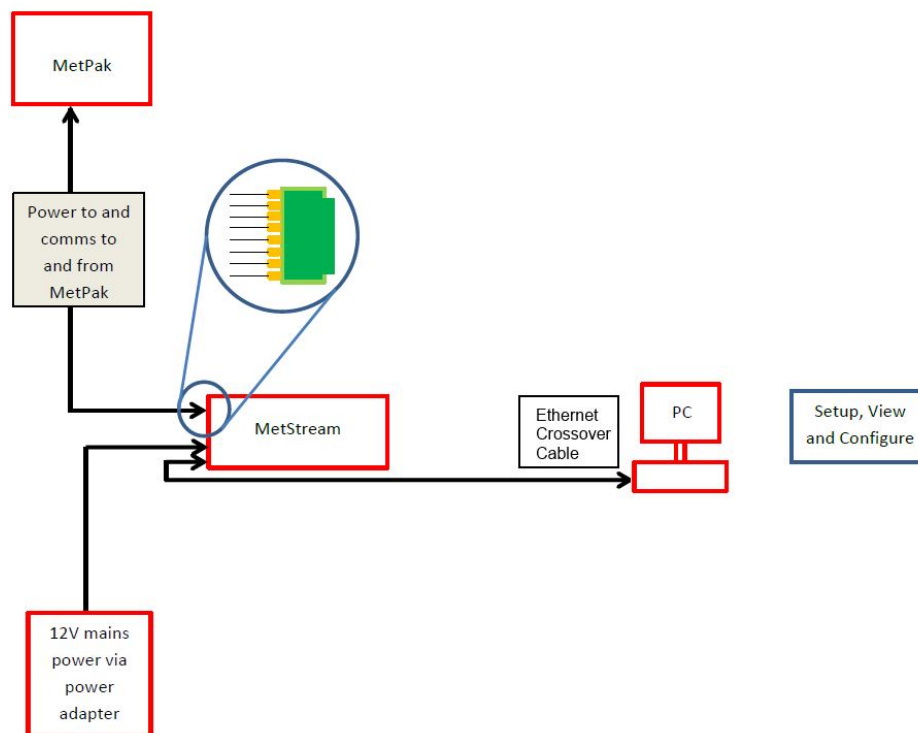
Gill MScan Software (supplied on the CD).

Computer preferably running Internet Explorer version IE9 (Chrome) or Mozilla Firefox 19.0.2.

MetPak Range Unit or suitable connecting device.

6.1 Accessing the MetStream GUI using a PC and Ethernet Crossover Cable.

Connect equipment as per the following system diagram.



On first applying power to the MetStream 100, wait for 90 seconds before attempting to access it for data.

6.1.1 PC/Laptop Set Up using Gill MScan Software.

If the PC/laptop has a Wi Fi connection then temporarily disable this function to connect to MetStream via a direct Ethernet crossover cable connection.

Note: - It is recommended to connect the MetPak or connected device to MetStream to ensure correct configuration, however it is possible to set up MetStream parameters without the connected device.

Load and Open Gill MScan Software on to the PC from the supplied CD.

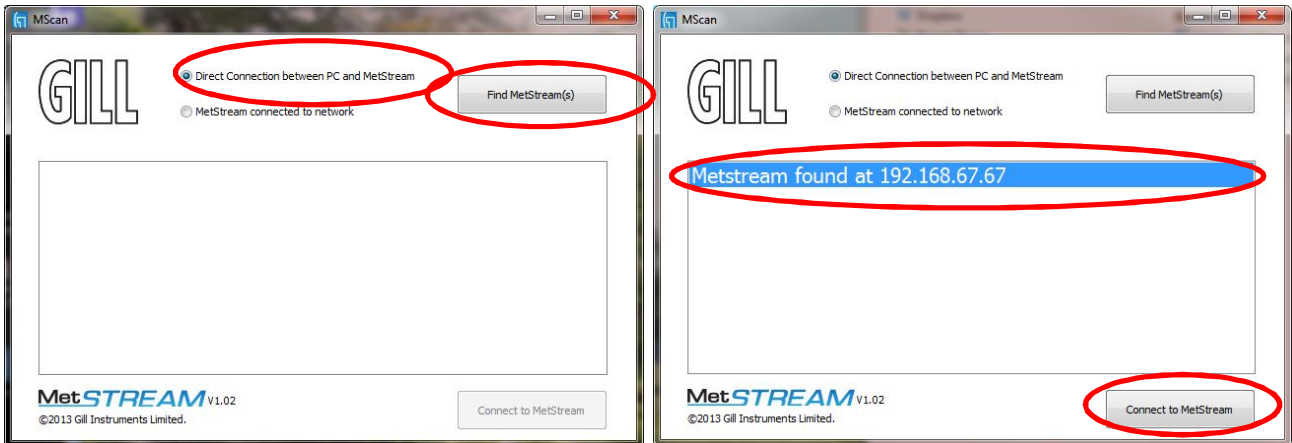
Select 'Direct Connection between PC and MetStream'.

Click on the 'Find MetStream(s)' button.

A MetStream should be found at 192.168.67.67.

Click on MetStream Found at 192.168.67.67 to highlight the MetStream IP Address.

Click on 'Connect to MetStream'.

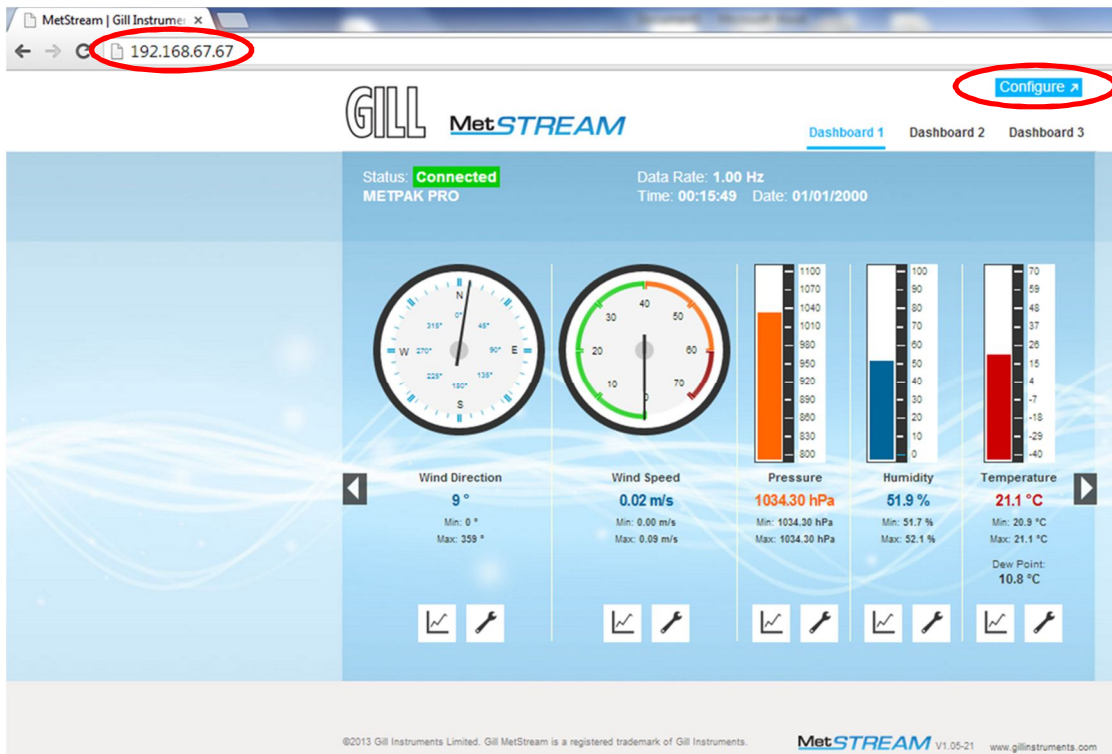


Your default browser will be launched and connect to the MetStream homepage

If the opening MetPak screen does not appear to reflect the currently connected equipment then clear the Browser Cache and refresh the display.

In Chrome the cache can be cleared by selecting 'Customise and control Google Chrome/History/Clear browsing history'. Then select only 'Empty the cache'.

Now Configure or retrieve MetStream data as per Para 6.5.



6.1.2 PC/Laptop Set Up if Gill MScan Software is not available.

If the PC/laptop has a Wi Fi connection then temporarily disable this function to connect to MetStream via a direct Ethernet crossover cable connection.

Apply power to MetStream 100 (wait for 90 seconds before attempting to access it for data).

On the PC select Start/

Select/

Control Panel/

Network and Sharing Center/

Local Area Connection/

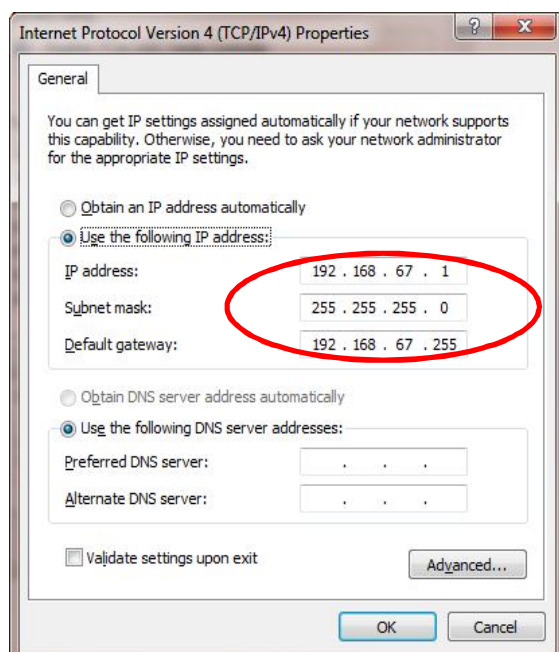
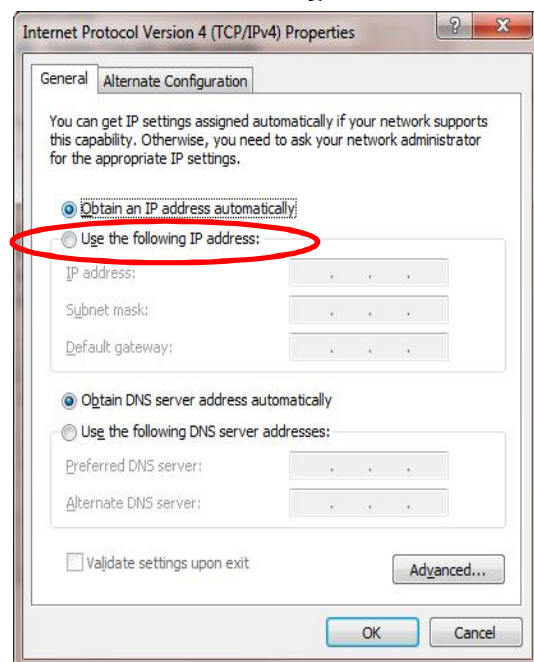
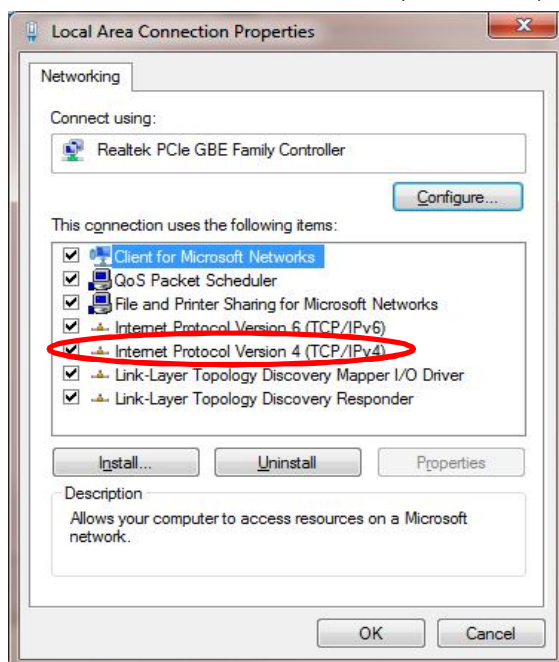
Properties.

Double click on:-

Internet Protocol Version 4 (TCP/IPv4).

Now click on:-

'Use the following IP address'.



Type in the PC IP address **192.168.67.1**
(cannot be the same as the MetStream default IP address 192.168.67.67).

Type in Subnet Mask **255.255.255.0**.

Type in Default gateway **192.168.67.255**.

Click on OK.

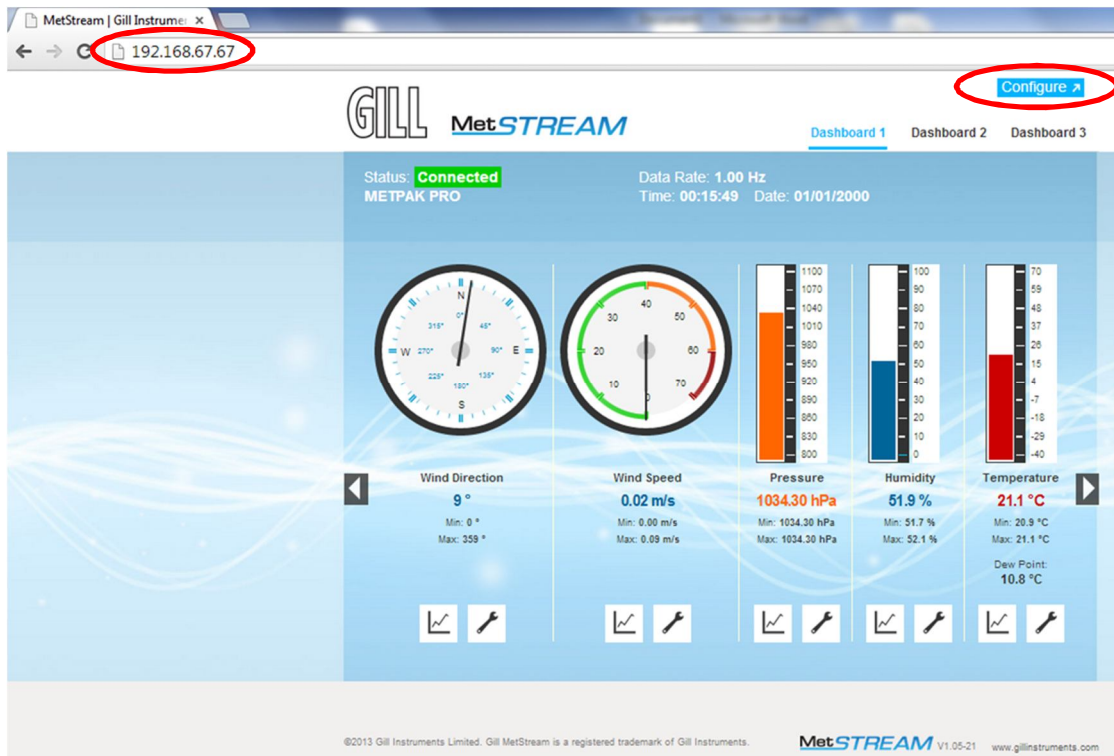
On the PC open Internet Explorer (or equivalent) browser window.

Type in a default MetStream IP address 192.168.67.67. This IP address can be used irrespective of any fixed IP address that may have been previously set.

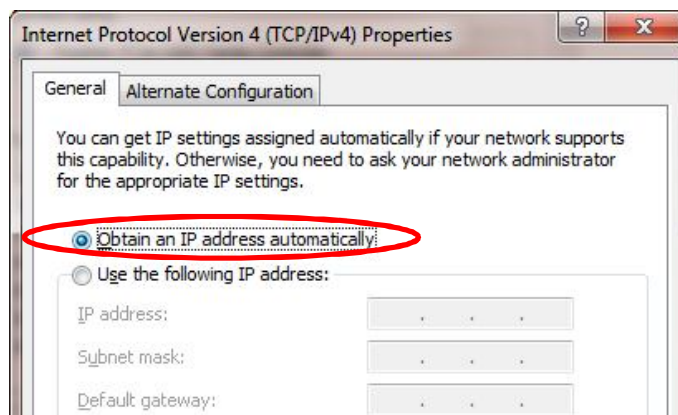
If the opening MetPak screen does not appear to reflect the currently connected equipment then clear the Browser Cache and refresh the display.

In Chrome the cache can be cleared by selecting ‘Customise and control Google Chrome/History/Clear browsing history’. Then select only ‘Empty the cache’.

Now Configure or retrieve MetStream data as per Para 6.5.



Upon completion of configuration to return the PC/Laptop to its previous state then:-



On the PC select Start/Select/Control Panel/Network and Sharing Center/Local Area Connection/Properties.

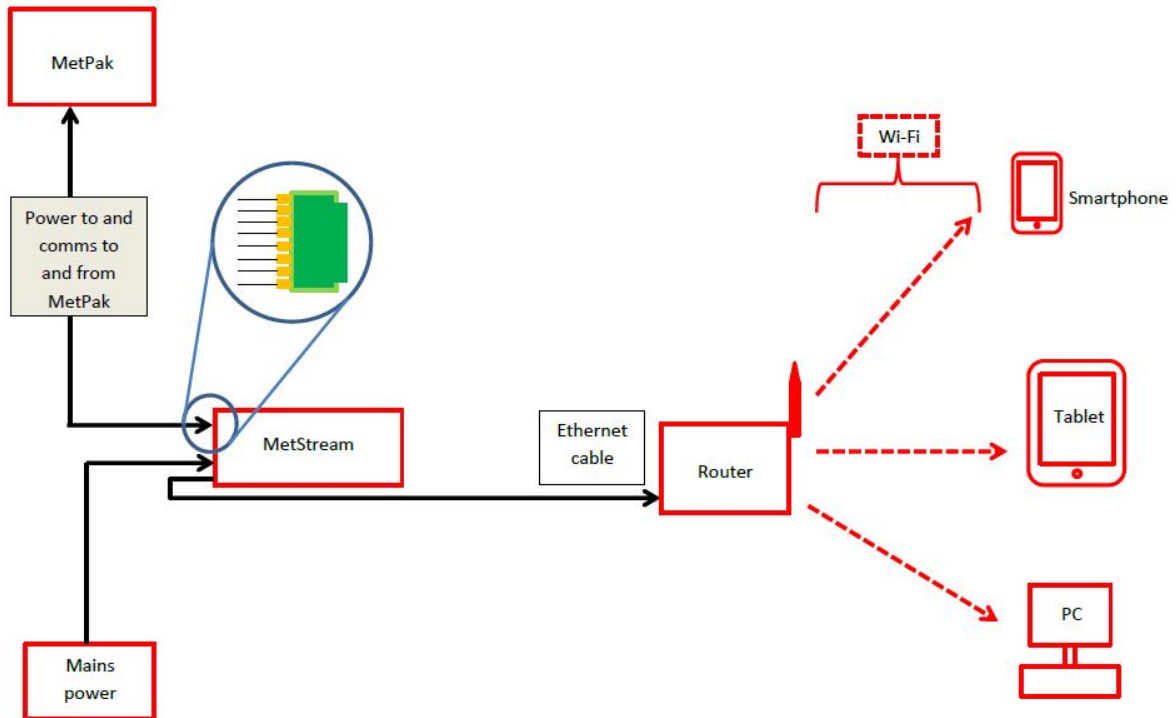
Double click on Internet Protocol Version 4 (TCP/IPv4).

Click on Obtain an IP address automatically and then click OK etc.

Re-enable the PC/Laptop wireless function as appropriate.

6.2 Accessing the MetStream GUI using a PC and a Wi-Fi Router

Note:- Alternative Wi-Fi connected devices may be used to connect to the MetStream unit to view the GUI if required e.g. Tablet or Smart Phone however the Gill MScan Software will only run on a PC to determine the IP address. Alternative IP Scan app software will be needed.



Connect MetStream to a Wi-Fi Router using the 2 metre Ethernet Cable supplied or any standard non crossover Ethernet cable.

On first applying power to the MetStream 100, wait for 90 seconds before attempting to access it for data.

If not already connected to the WI Fi Router on the PC select:-

Start/

Select/

Control Panel/

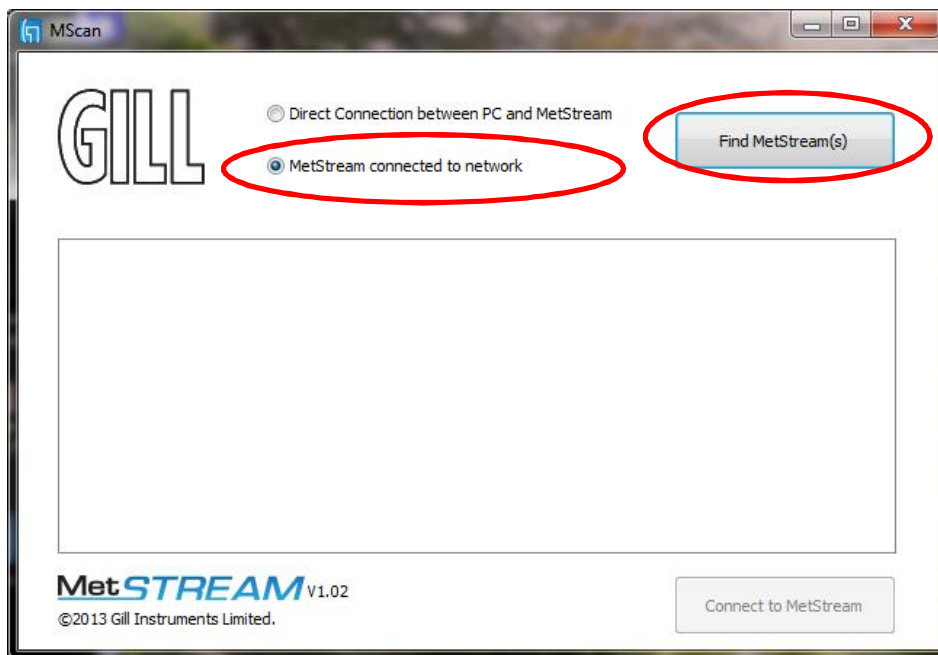
Network and Sharing Center/

Select the appropriate Wi Fi Network and log on to the Wi Fi Network (the Wi Fi password may be needed).

Once connected to the Wi Fi network load and open Gill MScan Software on to the PC (MScan Software is on the supplied CD).

Select 'MetStream Connected to Network'.

Click on the 'Find MetStream' button.

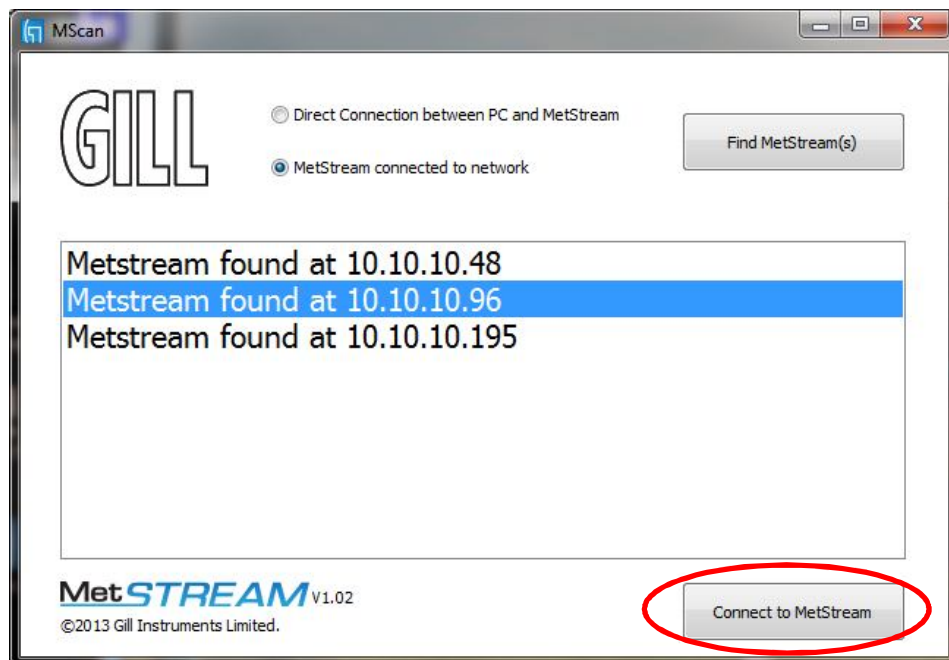


A list of available MetStreams will be listed with their IP addresses.

Click on the appropriate 'MetStream found at xxxxx' IP address to highlight the one to connect to.

Click on 'Connect to MetStream'.

Your default browser will be launched and will connect to the MetStream homepage.

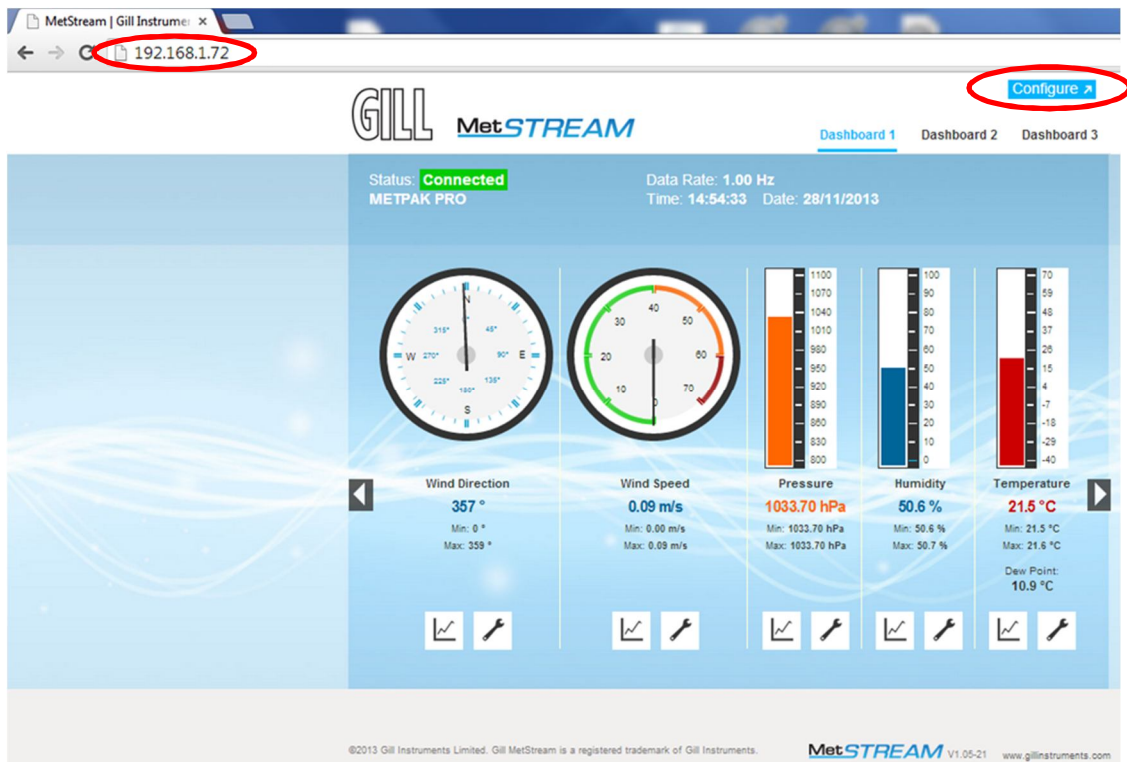


NOTE the MetStream IP address is detected by the Wi Fi Router and can change each time MetStream is powered up if the MetStream unit is set for DHCP. Use Configure to fix the IP Address of MetStream if required.

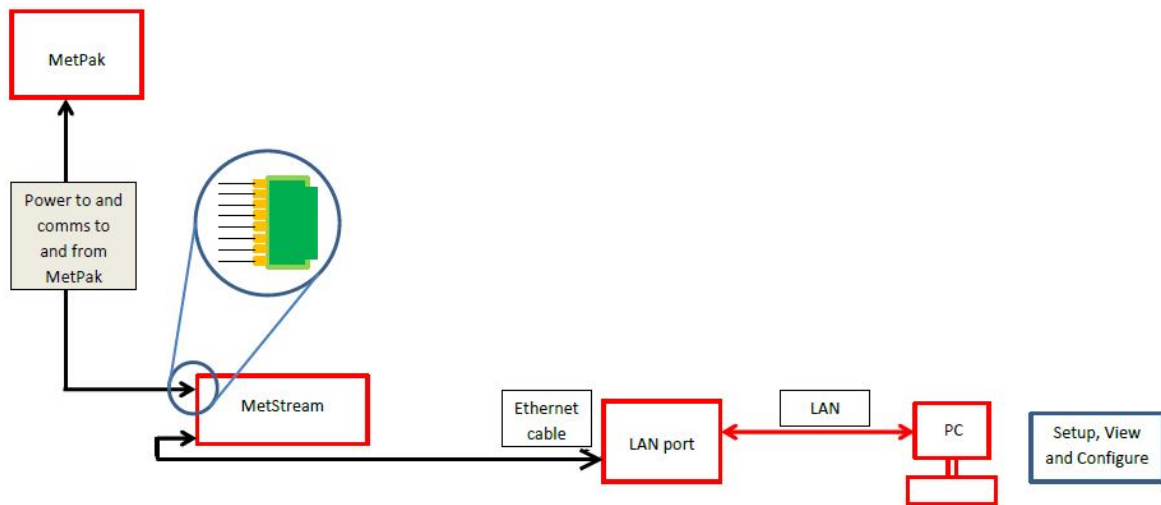
If the opening MetPak screen does not appear to reflect the currently connected equipment then clear the Browser Cache and refresh the display.

In Chrome the cache can be cleared by selecting 'Customise and control Google Chrome/History/Clear browsing history'. Then select only 'Empty the cache'.

Now Configure or retrieve MetStream data as per Para 6.5.



6.3 Accessing the MetStream GUI using a PC and a LAN Port Connection.



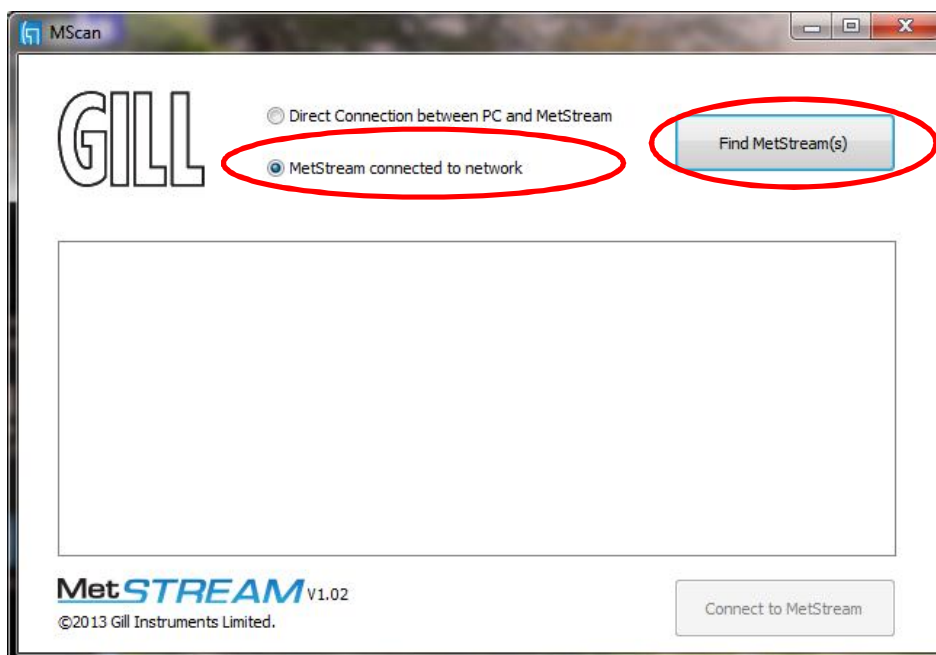
Connect MetStream to a LAN connection using the 2 metre Ethernet Cable supplied or any standard non crossover Ethernet cable.

On first applying power to the MetStream 100, wait for 90 seconds before attempting to access it for data.

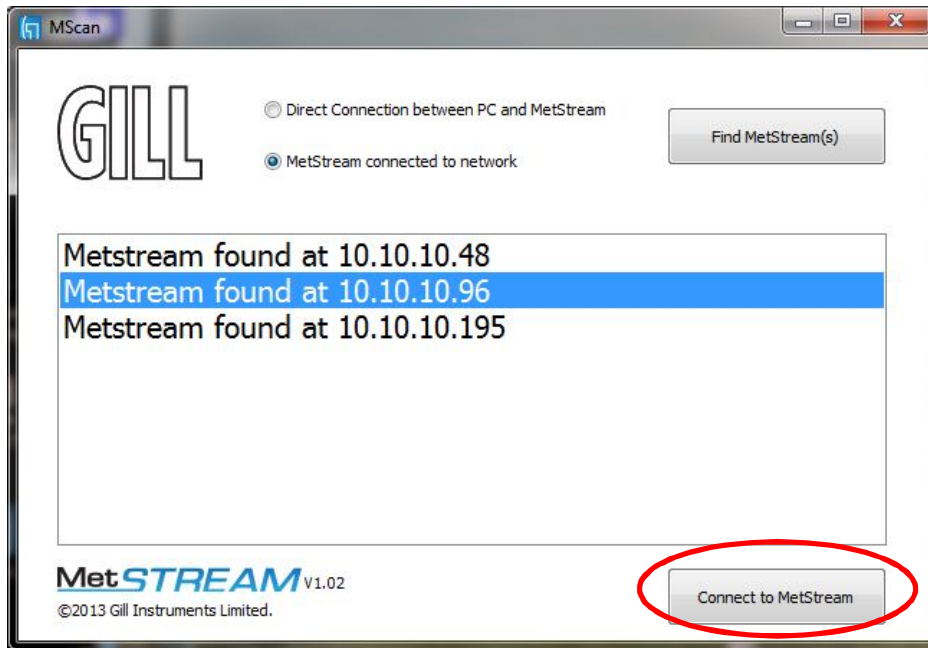
Open Gill MScan Software load and Open Gill MScan Software on to the PC from the supplied CD.

Select 'MetStream Connected to Network'.

Click on the 'Find MetStream' button.



A list of available MetStreams will be listed with their IP addresses.
 Click on and highlight the MetStream found at IP address that you want to connect to.
 Click on ‘Connect to MetStream’.

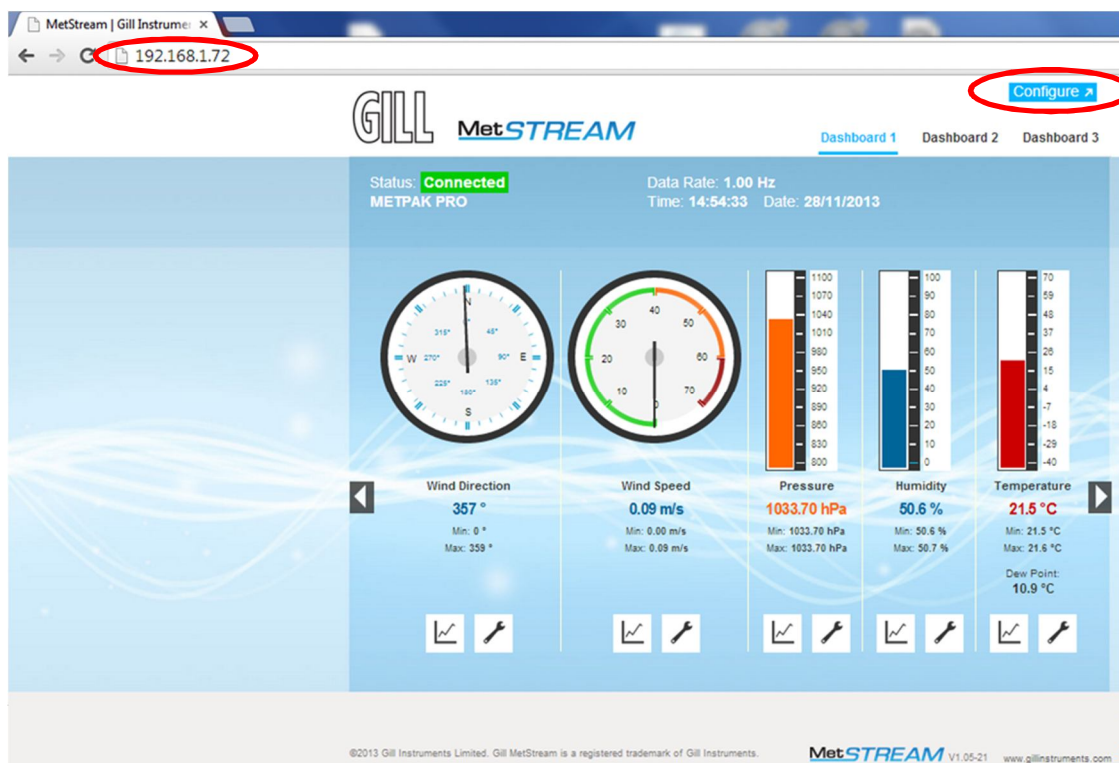


Your default browser will be launched and will connect to the MetStream homepage

If the opening MetPak screen does not appear to reflect the currently connected equipment then clear the Browser Cache and refresh the display.

In Chrome the cache can be cleared by selecting ‘Customise and control Google Chrome/History/Clear browsing history’. Then select only ‘Empty the cache’.

Now Configure or retrieve MetStream data as per Para 6.5.

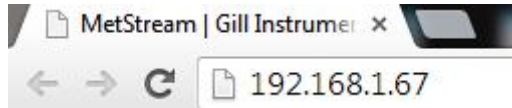


6.4 MetStream Front Page GUI Features.

Once a Web Browser connection has been established then it is possible to view the MetPak/connected instrument data.

Open Browser Window

Type in the IP address e.g. 192.168.1.67 and Enter

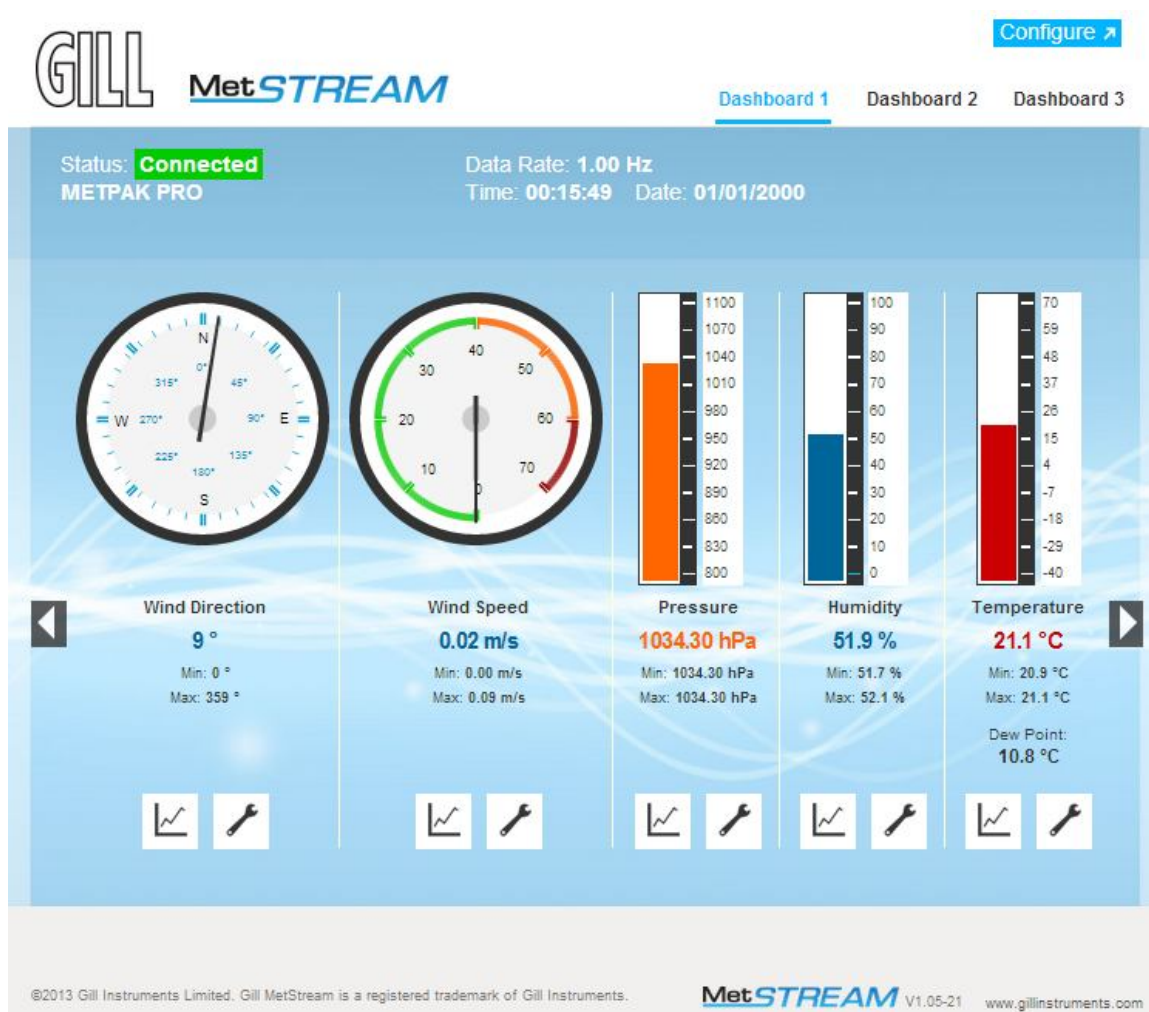


MetStream will communicate with the attached RS232/422/485 connected device, read settings, log data automatically and display data in a graphical format.

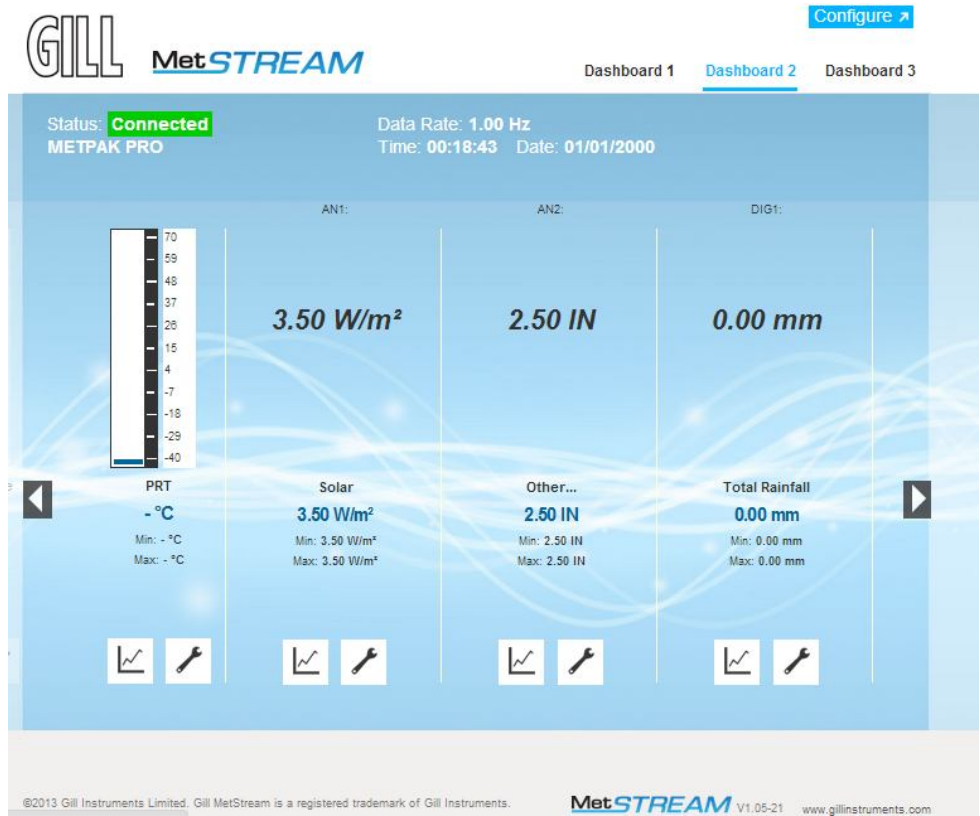
In this case a Gill MetPak Pro is connected to the MetStream device and the Graphical User Interface (GUI) opens with the following display.

Dashboards

MetPak Pro parameters open on Dashboard 1, to display further MetPak Pro instruments click on Dashboards 2 and 3.



Dashboard 2 instrument display shown as follows:-



Dashboard 3 instrument display shown as follows:-



Where applicable at the bottom of the MetStream parameter display there are 2 tool signs.



Trend Graphs

Click on the Trend Graph

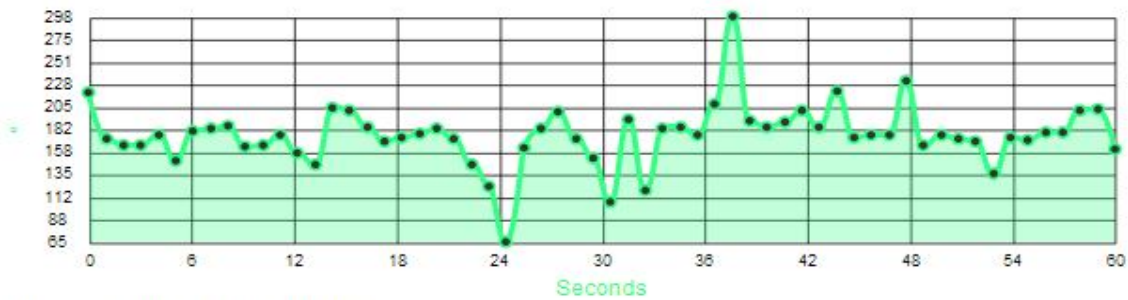


icon to open a trend graph of the parameter of interest.

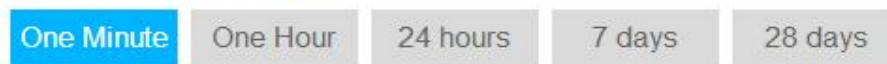
E.g. Wind Direction.

Select a trend period value as required.

Wind Direction trend plots



Choose your period value



Trend Graph Period Sampling

One Minute screen - a reading is taken every second.

One Hour Screen - a reading is taken once every minute.

24 hours screen - a reading is taken once every 30 minutes.

7 days - a reading is taken once every 3 hours (00:00, 03:00, 06:00 etc.).

28 days - a reading is taken once every 3 hours (00:00, 03:00, 06:00 etc.).

Trend plots are built from the logged data stored in the MetStream. On power up, it may take several minutes for all of the plots to be populated from the stored data.

Change Reading Type and Reset Max/Min.

Click on the  icon.

Select Wind Direction Dial style or reset max or min or any as required, click on Save Settings.

Reset Minimum and Maximum Values



Reset Min

Reset Max

Select Your Dial Style:

NSEW

Maritime

Save Settings

NOTES:

‘Save settings’ only saves settings for the period that the browser window is open. If the browser window is refreshed or PC re-started then the display will revert to the default screen settings on first opening MetStream.

Browser Window saved settings are only applicable to the PC on which MetStream is viewed.

Saved Settings do not change the MetStream unit configuration.

If Global use PC browser settings need to be changed then use MetStream Configure (password protected) to make changes to MetStream.

6.5 MetStream Configuration (Administrator Use)

Access to the Configure pages is dependent on having username and password access.

Click on the Configure  icon at the top of the main screen.

6.5.1 Login

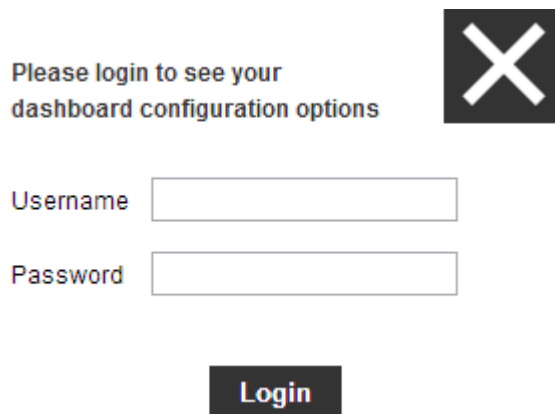
Enter Username and Password.

(MetStream units are shipped with a default username and password as follows).

Username: admin (default, note all lowercase letters).

Password: password (default, note all lower case letters).

Click on Login.



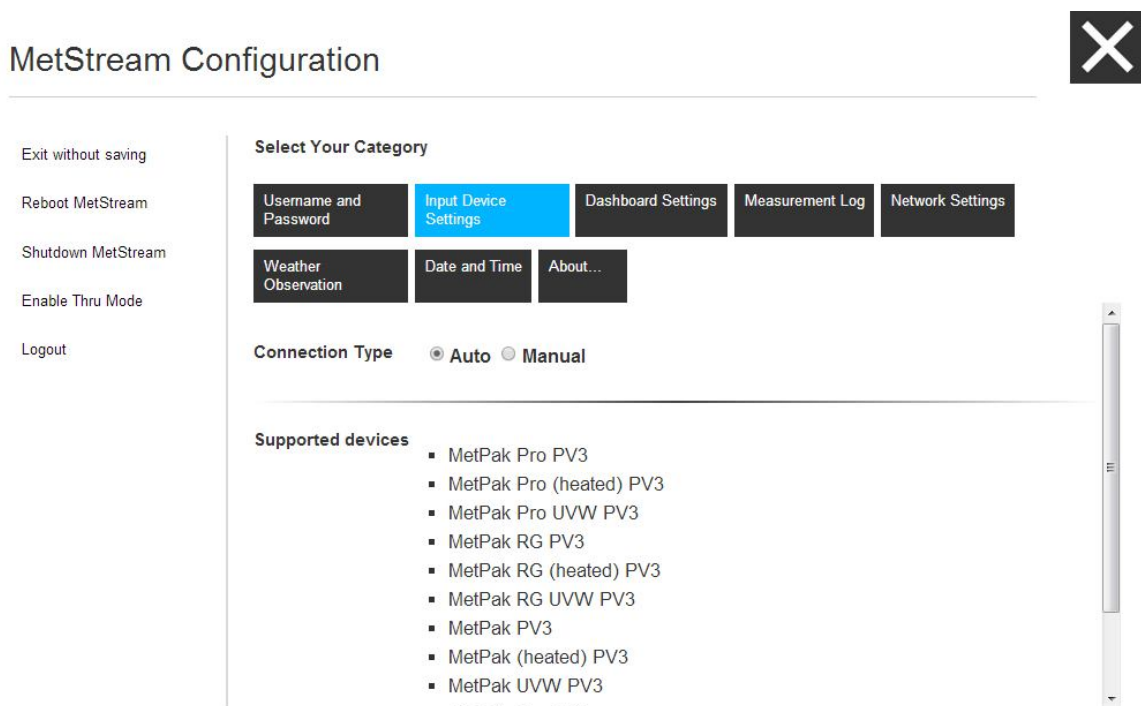
Please login to see your dashboard configuration options 


Username

Password

Login

This will bring you to the opening MetStream Configuration screen.



MetStream Configuration 

Exit without saving

Reboot MetStream

Shutdown MetStream

Enable Thru Mode

Logout

Select Your Category

- Username and Password
- Input Device Settings**
- Dashboard Settings
- Measurement Log
- Network Settings

Weather Observation

Date and Time

About...

Connection Type Auto Manual

Supported devices

- MetPak Pro PV3
- MetPak Pro (heated) PV3
- MetPak Pro UVW PV3
- MetPak RG PV3
- MetPak RG (heated) PV3
- MetPak RG UVW PV3
- MetPak PV3
- MetPak (heated) PV3
- MetPak UVW PV3

6.5.2 Exit/Reboot/Shutdown/Thru Mode/Logout

On the left hand side of the Configuration screen there are five buttons:-


Exit without saving

Reboot MetStream

Shutdown MetStream

Enable Thru Mode

Logout

Exit without saving (and ) – Go back to GUI front screen without changing settings but will still be logged into configure screen. If you then click on Configure you will be taken to the Configure tabs without having to login again.

Reboot MetStream – An electrical power down of MetStream that will need a refresh of the Web browser screen.

Shutdown MetStream – Turns off power inside the MetStream box. This will require MetStream to be powered up to view the web GUI again.

WARNING: This command will require the physical removal of the power from the MetStream and the reapplication of power. MetStream cannot be restarted remotely once this command has been issued.


Enable Thru Mode – A mode to allow other software (e.g. a Terminal Programme) to access the connected instrument to view or change its settings (see Para 6.5.11).

Logout – Go back to the GUI screen this time if accessing Configure then a new login will be required.

6.5.3 Username and Password

If it is required to change the default Username and Password then select this page as follows:-

To change the Password complete the fields identified below and click on Submit.

MetStream Configuration 

Exit without saving

Reboot MetStream

Shutdown MetStream

Enable Thru Mode

Logout

Select Your Category

Username and Password

Input Device Settings

Dashboard Settings

Measurement Log

Network Settings

Weather Observation

Date and Time

About...

Username or Password

Password

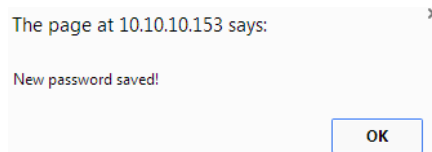
Current Username:

Current Password:

New Password:


Confirm New Password:

Click on OK as below and this takes you back to the Main Dashboard screen to log in with the new Password.



To change the Username select this option from the Username or Password dropdown menu.

Complete the New Username fields identified below and click on Submit.

MetStream Configuration 

Exit without saving

Reboot MetStream

Shutdown MetStream

Enable Thru Mode

Logout

Select Your Category

Username and Password

Input Device Settings

Dashboard Settings

Measurement Log

Network Settings

Weather Observation

Date and Time

About...

Username or Password

Username

Current Username:

Current Password:

New Username:

Note you cannot change password and user name at the same time. They must be done separately.

6.5.4 Date and Time

When MetStream is first powered up it opens with a default Time Zone, default 01/01/2000 date and zero hour time.

Select the required Time Zone from the drop down menu and click on ‘Save Time Zone’.

Type in the required Time and Date into the relevant boxes and click on ‘Save Time & Date’.

Select Your Category

Username and Password	Input Device Settings	Dashboard Settings	Measurement Log	Network Settings
Weather Observation	Date and Time	About...		

Time Zone Time zone:

Time And Date Time: Date:

Default ‘Change Time Source’ setting is NTP (see Notes below).

Time Source

Manual Enable

NTP Enable

PTP Enable

If PTP enabled (see Notes below) the screen will show:-

Time Source

Manual Enable

NTP Enable

PTP Enable

PTP options:

Notes:

Manual Time, for non-networked units, relies on MetStream internal clock.

Network Time Protocol (NTP) recommended setting for network connected PC’s which can obtain time synchronisation over the internet.

Precision Time Protocol (PTP) looks for the network provider master clock for specific closed networks.

PTP options data will show the IP address of the PTP source.

6.5.5 Dashboard Settings (Administrator Use)

Note: Changing Dashboard Settings affects the MetStream data view seen by all PC's using the same MetStream Web browser IP address.

Choose appropriate front GUI dashboard settings as required (MetPak connected equipment settings illustrated).

Default Measurement Ranges units relate to all instrument measurements that are shown with a gauge and digital reading rather than just a digital reading on the front GUI screen.

Select Your Category

Username and Password	Input Device Settings	Dashboard Settings	Measurement Log	Network Settings
Weather Observation	Date and Time	About...		

Default Units

Wind Speed:	MS	Pressure:	HPA	Temperature:	C	Dewpoint:	C
PRT:	C	Total Rainfall (DIG1):	MM				

Default Measurement Ranges

Wind Speed:	0	70	Pressure:	800	1100	Humidity:	0	100
Temperature:	-40	70	PRT:	-40	70	Check:		

Background

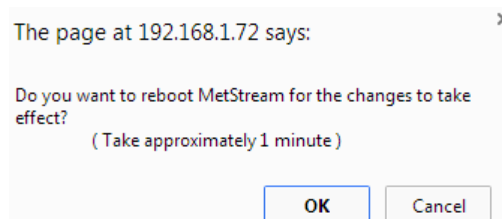
Select a Background Image: Default

Dashboard title

Save Settings

Click on Save Settings when changes have been made and a warning screen will be shown. Click on OK.

After approximately 1 minute close the GUI and re-open the GUI to view new changes (this is not an automatic process).



6.5.6 Data Logging

Logging Notes:

MetStream logs data to an internal SD card (not user removable).

Data logging occurs continuously once MetStream is connected to a recognised/configured external instrument; in this case data logging cannot be disabled.

If no unit (e.g. MetPak) is connected to the MetStream then no data is logged.

MetStream logs data at the output rate of the connected instrument (up to 20Hz).

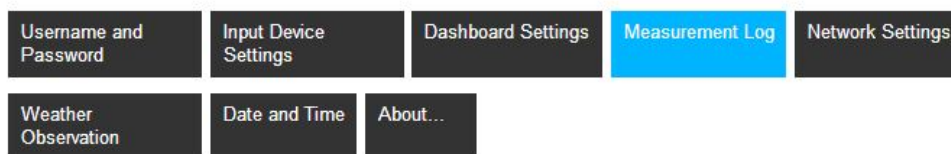
MetStream creates daily log files up to a maximum of 29 after which the oldest dated folder is deleted.

Logged data can be downloaded to a PC or to a USB flash drive connected to MetStream.

Saving Logged Data to a PC Download Location

Select the Measurement Log Tab.

Select Your Category



Measurement
Log Files

Select files to be copied or deleted:

- Log: 01/01/2000 **Save**
- Log: 01/11/2013 **Save**
- Log: 28/11/2013 **Save**

Refresh external drives

Delete selected files

Copy selected files

Select an External Drive:

*** No drives found ***

If for instance you had selected the box of Log: 28/11/2013 and Clicked on **Save** this would save an MSLOG_20131118.csv file to the PC Downloads Folder.

(E.g. Start/Documents/Downloads (MSLOG_Year/Month/Day.csv file).

This file can automatically open in a spreadsheet format if for instance Microsoft Excel or Libre Office Calc are installed on the PC as per the following example. Otherwise the data can be opened as a Comma Separated text file.

sequence_number	date_stamp	time_stamp	time_usernode	wind_spe	wind_dir	wind_dir_u	axis_ve_u	axis_ve_v	axis_ve_w	axis_ve_o	axis_ve_p	axis_ve_h	axis_ve_t
1	2013:11:18	08:35:21	1965 Q	0.01 MS	112 DEG	0	0	0	0	1011 HPA	51.5 %		
2	2013:11:18	08:35:22	2090 Q	0.01 MS	284 DEG	0	0	0	0	1011 HPA	51.5 %		
3	2013:11:18	08:35:23	2031 Q	0.01 MS	58 DEG	0	0	0	0	1011 HPA	51.5 %		
4	2013:11:18	08:35:24	2187 Q	0.02 MS	179 DEG	0	0	0	0	1011 HPA	51.5 %		
5	2013:11:18	08:35:25	2159 Q	0.01 MS	14 DEG	0	0	0	0	1011 HPA	51.5 %		
6	2013:11:18	08:35:26	2223 Q	0.01 MS	15 DEG	0	0	0	0	1011 HPA	51.5 %		
7	2013:11:18	08:35:27	2318 Q	0.03 MS	6 DEG	0	0	0	0	1011 HPA	51.5 %		
8	2013:11:18	08:35:28	2320 Q	0.02 MS	7 DEG	0	0	0	0	1011 HPA	51.5 %		
9	2013:11:18	08:35:29	2598 Q	0.01 MS	263 DEG	0	0	0	0	1011 HPA	51.5 %		
10	2013:11:18	08:35:30	2723 Q	0.01 MS	24 DEG	0	0	0	0	1011 HPA	51.5 %		
11	2013:11:18	08:35:31	4374 Q	0.01 MS	158 DEG	0	0	0	0	1011 HPA	51.5 %		

Saving Data to a USB Flash Drive

Data logged and saved to the internal SD card can be manually copied to an external USB flash drive. Data is not automatically or directly sent to the USB flash drive.

MetStream will support USB flash drives up to 32GB.

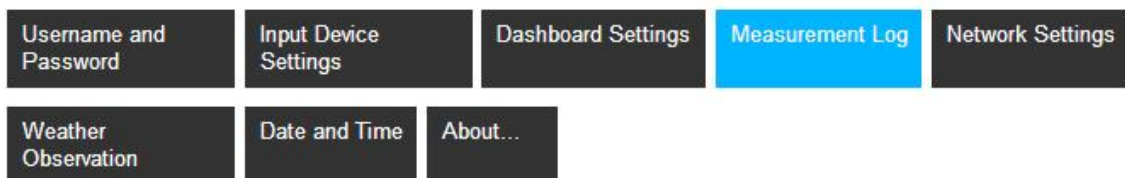
If no external flash drive has been connected to MetStream then this will be reported (No Drives Found).

If a USB flash drive has been inserted then when the MetStream Measurement Log screen is reached an external drive will be recognised e.g. Kingston.

When connecting a USB drive to MetStream after power up then open the Measurement Log screen and click on 'Refresh external drives'.

Note: When MetStream is first switched on the day/month/year defaults to 01/01/2000 until Date and Time are configured. The log file created for this date can be deleted if required.

Select Your Category



Measurement Log Files

Select files to be copied or deleted:

- Log: 01/01/2000 Save
- Log: 01/11/2013 Save
- Log: 28/11/2013 Save

Refresh external drives

Delete selected files

Copy selected files

Select an External Drive:

KINGSTON

Click on the external drive tick box (e.g. KINGSTON) to enable copying of files (highlights selected files options).

Click on Log or Logs to be saved (e.g. Log 01/11/2013).

Measurement Log Files

Select files to be copied or deleted:

- Log: 01/01/2000 Save
- Log: 01/11/2013 Save
- Log: 28/11/2013 Save

Refresh external drives

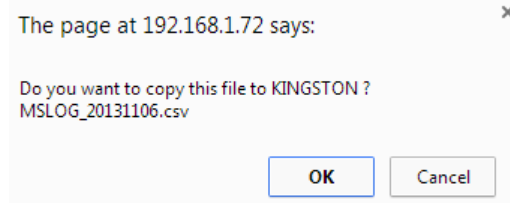
Delete selected files

Copy selected files

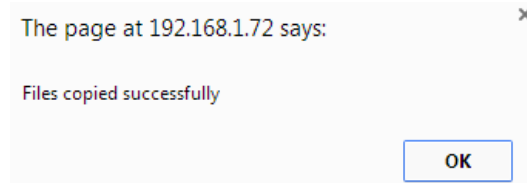
Select an External Drive:

KINGSTON

Click on Ok



After 5-10 seconds MetStream will report.



Measurement Log Files

Select files to be copied or deleted:

- Log: 01/01/2000 Save
- Log: 01/11/2013 Save (100%)
- Log: 28/11/2013 Save

Refresh external drives

Delete selected files

Copy selected files

Copy progression: 100%

Select an External Drive:

KINGSTON

Data is saved on the USB flash drive as a .CSV file identified as for example by MSLOG_20131101 (Year 2013/Month11/Day01).

This file can automatically open in a spreadsheet format if for instance Microsoft Excel or Libre Office Calc are installed on the PC as per the following example.

1	sequence	date	stamp	time	stamp	user	node	wind_spe	wind_spe	wind_dir	wind_dir	u_axis	u_axis	v_axis	v_axis	w_axis	w_axis	pressure	humidity	humidity	temperat	temperat	dewpoint	dewpoint	prt	units	speed	speed	sonic	tem	tem	tsu
2	171	2013-11-06	11:19:41	244673	Q			0.2	MS	170	DEG	0	-	0	-	0	-	1001	HPA	65.1	%	20.3	C	56.4	F	0	-	0	-	0	-	
3	172	2013-11-06	11:19:42	244401	Q			0.23	MS	168	DEG	0	-	0	-	0	-	1001	HPA	65.1	%	20.3	C	56.4	F	0	-	0	-	0	-	
4	173	2013-11-06	11:19:43	244709	Q			0.23	MS	206	DEG	0	-	0	-	0	-	1001	HPA	65.1	%	20.3	C	56.4	F	0	-	0	-	0	-	
5	174	2013-11-06	11:19:44	244743	Q			0.22	MS	168	DEG	0	-	0	-	0	-	1001	HPA	65.1	%	20.3	C	56.3	F	0	-	0	-	0	-	
6	175	2013-11-06	11:19:45	244837	Q			0.23	MS	174	DEG	0	-	0	-	0	-	1001	HPA	65.1	%	20.3	C	56.3	F	0	-	0	-	0	-	
7	176	2013-11-06	11:19:46	245023	Q			0.25	MS	187	DEG	0	-	0	-	0	-	1001	HPA	65.1	%	20.3	C	56.3	F	0	-	0	-	0	-	
8	177	2013-11-06	11:19:47	244843	Q			0.26	MS	172	DEG	0	-	0	-	0	-	1001	HPA	65	%	20.3	C	56.3	F	0	-	0	-	0	-	
9	178	2013-11-06	11:19:48	244968	Q			0.19	MS	172	DEG	0	-	0	-	0	-	1001	HPA	65	%	20.3	C	56.3	F	0	-	0	-	0	-	
10	179	2013-11-06	11:19:49	244971	Q			0.18	MS	192	DEG	0	-	0	-	0	-	1001	HPA	65	%	20.3	C	56.3	F	0	-	0	-	0	-	
11	180	2013-11-06	11:19:50	245218	Q			0.22	MS	159	DEG	0	-	0	-	0	-	1001	HPA	65.1	%	20.3	C	56.3	F	0	-	0	-	0	-	
12	181	2013-11-06	11:19:51	245190	Q			0.21	MS	178	DEG	0	-	0	-	0	-	1001	HPA	65	%	20.3	C	56.3	F	0	-	0	-	0	-	
13	182	2013-11-06	11:19:52	245193	Q			0.2	MS	171	DEG	0	-	0	-	0	-	1001	HPA	65	%	20.3	C	56.3	F	0	-	0	-	0	-	
14	183	2013-11-06	11:19:53	245257	Q			0.16	MS	179	DEG	0	-	0	-	0	-	1001	HPA	65	%	20.3	C	56.3	F	0	-	0	-	0	-	
15	184	2013-11-06	11:19:54	245229	Q			0.18	MS	175	DEG	0	-	0	-	0	-	1001	HPA	65.1	%	20.3	C	56.3	F	0	-	0	-	0	-	
16	185	2013-11-06	11:19:55	245354	Q			0.21	MS	192	DEG	0	-	0	-	0	-	1001	HPA	65.1	%	20.3	C	56.3	F	0	-	0	-	0	-	
17	186	2013-11-06	11:19:56	245418	Q			0.21	MS	179	DEG	0	-	0	-	0	-	1001	HPA	65.1	%	20.3	C	56.4	F	0	-	0	-	0	-	
18	187	2013-11-06	11:19:57	245373	Q			0.2	MS	177	DEG	0	-	0	-	0	-	1001	HPA	65.2	%	20.3	C	56.4	F	0	-	0	-	0	-	
19	188	2013-11-06	11:19:58	245515	Q			0.16	MS	184	DEG	0	-	0	-	0	-	1001	HPA	65.2	%	20.3	C	56.4	F	0	-	0	-	0	-	
20	189	2013-11-06	11:19:59	245579	Q			0.24	MS	176	DEG	0	-	0	-	0	-	1001	HPA	65.2	%	20.3	C	56.4	F	0	-	0	-	0	-	
21	190	2013-11-06	11:20:00	245674	Q			0.23	MS	170	DEG	0	-	0	-	0	-	1001	HPA	65.2	%	20.3	C	56.4	F	0	-	0	-	0	-	
22	191	2013-11-06	11:20:01	245676	Q			0.22	MS	183	DEG	0	-	0	-	0	-	1001	HPA	65.2	%	20.3	C	56.4	F	0	-	0	-	0	-	
23	192	2013-11-06	11:20:02	245496	Q			0.21	MS	180	DEG	0	-	0	-	0	-	1001	HPA	65.2	%	20.3	C	56.4	F	0	-	0	-	0	-	
24	193	2013-11-06	11:20:03	245896	Q			0.27	MS	197	DEG	0	-	0	-	0	-	1001	HPA	65.2	%	20.3	C	56.5	F	0	-	0	-	0	-	
25	194	2013-11-06	11:20:04	245838	Q			0.18	MS	191	DEG	0	-	0	-	0	-	1001	HPA	65.2	%	20.3	C	56.5	F	0	-	0	-	0	-	
26	195	2013-11-06	11:20:05	245871	Q			0.15	MS	205	DEG	0	-	0	-	0	-	1001	HPA	65.2	%	20.3	C	56.5	F	0	-	0	-	0	-	
27	196	2013-11-06	11:20:06	245935	Q			0.2	MS	171	DEG	0	-	0	-	0	-	1001	HPA	65.2	%	20.3	C	56.5	F	0	-	0	-	0	-	
28	197	2013-11-06	11:20:07	245907	Q			0.14	MS	177	DEG	0	-	0	-	0	-	1001	HPA	65.2	%	20.3	C	56.4	F	0	-	0	-	0	-	
29	198	2013-11-06	11:20:08	246022	Q			0.15	MS	190	DEG	0	-	0	-	0	-	1001	HPA	65.1	%	20.3	C	56.4	F	0	-	0	-	0	-	
30	199	2013-11-06	11:20:09	246035	Q			0.17	MS	173	DEG	0	-	0	-	0	-	1001	HPA	65.2	%	20.3	C	56.4	F	0	-	0	-	0	-	
31	200	2013-11-06	11:20:10	246129	Q			0.19	MS	171	DEG	0	-	0	-	0	-	1001	HPA	65.2	%	20.3	C	56.4	F	0	-	0	-	0	-	
32	201	2013-11-06	11:20:11	246254	Q			0.13	MS	175	DEG	0	-	0	-	0	-	1001	HPA	65.2	%	20.3	C	56.4	F	0	-	0	-	0	-	
33	202	2013-11-06	11:20:12	246196	Q			0.18	MS	177	DEG	0	-	0	-	0	-	1001	HPA	65.2	%	20.3	C	56.4	F	0	-	0	-	0	-	
34	203	2013-11-06	11:20:13	246280	Q			0.22	MS	182	DEG	0	-	0	-	0	-	1001	HPA	65.1	%	20.3	C	56.4	F	0	-	0	-	0	-	
35	204	2013-11-06	11:20:14	246204	Q			0.18	MS	183	DEG	0	-	0	-	0	-	1001	HPA	65.1	%	20.3	C	56.4	F	0	-	0	-	0	-	
36	205	2013-11-06	11:20:15	246388	Q			0.11	MS	194	DEG	0	-	0	-	0	-	1001	HPA	65.1	%	20.3	C	56.4	F	0	-	0	-	0	-	
37	206	2013-11-06	11:20:16	246543	Q			0.14	MS	188	DEG	0	-	0	-	0	-	1001	HPA	65.1	%	20.3	C	56.4	F	0	-	0	-	0	-	
38	207	2013-11-06	11:20:17	246516	Q			0.23	MS	176	DEG	0	-	0	-	0	-	1000.9	HPA	65.1	%	20.3	C	56.4	F	0	-	0	-	0	-	
39	208	2013-11-06	11:20:18	246549	Q			0.19	MS	167	DEG	0	-	0	-	0	-	1000.9	HPA	65.1	%	20.3	C	56.4	F	0	-	0	-	0	-	
40	209	2013-11-06	11:20:19	246522	Q			0.2	MS	164	DEG	0	-	0	-	0	-	1000.9	HPA	65.1	%	20.3	C	56.4	F	0	-	0	-	0	-	
41	210	2013-11-06	11:20:20	246341	Q			0.23	MS	174	DEG	0	-	0	-	0	-	1000.9	HPA	65.1	%	20.3	C	56.4	F	0	-	0	-	0	-	
42	211	2013-11-06	11:20:21	246619	Q			0.17	MS	156	DEG	0	-	0	-	0	-	1001	HPA	65.1	%	20.3	C	56.4	F	0	-	0	-	0	-	
43	212	2013-11-06	11:20:22	246896	Q			0.22	MS	179	DEG	0	-	0	-	0	-	1000.9	HPA	65	%	20.3	C	56.4	F	0	-	0	-	0	-	

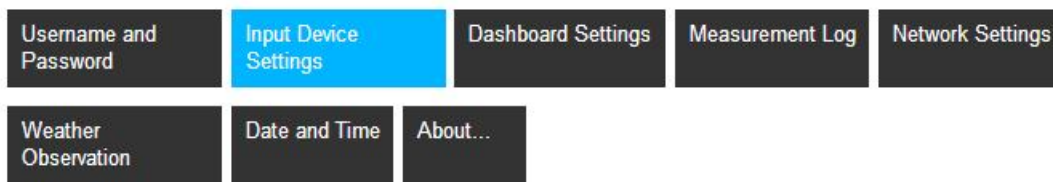
6.5.7 Input Device Settings

When Input Device Settings is selected Connection Type will show Auto as the default setting.

Auto

The Auto selection (default setting) allows MetStream to automatically detect any of the instruments detailed in the Supported Devices list and log the data string data that they are outputting.

Select Your Category



Connection Type Auto Manual

Supported devices

- MetPak Pro PV3
- MetPak Pro (heated) PV3
- MetPak Pro UVW PV3
- MetPak RG PV3
- MetPak RG (heated) PV3
- MetPak RG UVW PV3
- MetPak PV3
- MetPak (heated) PV3
- MetPak UVW PV3
- MetPak (heated) PV3
- MetPak UVW PV3
- MetPak Pro PV2
- MetPak PV2

Switch to auto

Manual Mode

MetPak Equipment

If Manual setting is selected then if the connected device settings can be read they will be shown as per the following example with a connected MetPak Pro.

If a device needs to be connected that is not on the supported list please contact Gill Instruments for advice.

Select Your Category

Username and Password	Input Device Settings	Dashboard Settings	Measurement Log	Network Settings
Weather Observation	Date and Time	About...		

Connection Type Auto Manual

Device	Device name:	<input type="text" value="METPAK PRO"/>
Baud Rate	Select a baud rate:	<input type="text" value="19200"/>
	Parity:	<input type="text" value="none"/>
	Stop:	<input type="text" value="1 bit"/>
Interface	Select an interface:	<input type="text" value="RS232"/>
Output Mode	<input checked="" type="radio"/> Continuous Mode <input type="radio"/> Polled mode	
ASCII Setup	Message Start Character:	<input type="text" value="0x02"/>
	Message End Character:	<input type="text" value="0x0d"/>
	Message Delimiter:	<input type="text" value="comma"/>
Number of Parameters	Select a number of parameters:	<input type="text" value="14"/>

Parameters Reported

Field 1 Node ▾ - ▾	Field 2 Wind Direction ▾ DEG ▾	Field 3 Wind Speed ▾ MS ▾	Field 4 Pressure ▾ HPA ▾
Field 5 Humidity ▾ % ▾	Field 6 Temperature ▾ C ▾	Field 7 Dewpoint ▾ C ▾	Field 8 PRT ▾ C ▾
Field 9 Custom 1 (AN) ▾ - ▾	Field 10 Custom 2 (AN) ▾ - ▾	Field 11 Custom 3 (DI) ▾ - ▾	Field 12 Voltage ▾ V ▾
Field 13 Status ▾ - ▾	Field 14 Check ▾ - ▾		

Custom Settings 1 (for Analogue input 1)

Sensor Type ▾ Alias Select Units: ▾

Custom Settings 2 (for Analogue input 2)

Sensor Type ▾ Alias Custom Unit

Custom Settings 3 (for Digital input 1)

Sensor Type ▾ Alias Select Units: ▾

Save Settings

6.5.8 Network Settings

Automatic IP address (DHCP)

The default Network setting is to obtain an IP address automatically using a Dynamic Host Configuration Protocol (DHCP). Thus the MetStream IP address will be allocated to it when connected to a Wi Fi Router or LAN Server.

Select Your Category

Username and Password	Input Device Settings	Dashboard Settings	Measurement Log	Network Settings
Weather Observation	Date and Time	About...		

LAN Interface Configuration

Obtain an IP address automatically (DHCP)
 Use a static IP address:

WLAN Interface Configuration

ON OFF

Thru Mode TCP Port

Hostname Hostname

Save Settings

Static IP Address

If a Static IP address is required for the MetStream connection then click on Use a Static IP address and complete the form.

When connecting MetStream in a system that has no DNS or DHCP server, it may be necessary to set up a static IP address (see Para 6.1.2 to determine the IP address).

LAN Interface Configuration

Obtain an IP address automatically (DHCP)
 Use a static IP address:

IP address:

Subnet mask:

Default gateway:

DNS:

WLAN Interface

The Wireless LAN Interface connection is not applicable to MetStream 100 (Use MetStream 105).

WLAN Interface Configuration

ON OFF

6.5.9 Weather Observation Website (WOW)

Applies to MetStream units that are connected to a device that has internet access.

The UK Meteorological Office have created a platform for collecting weather observation readings primarily from across the United Kingdom see <http://wow.metoffice.gov.uk/> (other countries have contributed data).

This can include data from instruments that are connected to MetStream that provide weather type data (e.g. the MetPak range). General details on WOW can be read at:- <http://wow.metoffice.gov.uk/support/general>

To register for sending data to the UK Met Office WOW site see the attached link:- <https://register.metoffice.gov.uk/WaveRegistrationClient/public/register.do?service=weatherobservations>

To send data to the Met Office site when an account has been set up, select the MetStream Weather Observation page.

Under Weather Observation Website:-

- Click on Enabled.
- Complete Site ID, Pin and Site Update Rate information.
- Click on Save Settings.

Data collected by MetStream will be sent automatically providing an internet link is established with the MetStream unit. The time interval for sending this data can be selected by the user

Select Your Category

Username and Password	Input Device Settings	Dashboard Settings	Measurement Log	Network Settings
Weather Observation	Date and Time	About..		

Weather Observation Website

Enabled Disabled

Site ID:

Pin:

Site Update Rate (minutes):

Save Settings

6.5.10 About

Reports various MetStream attributes that can be useful for record of unit build and fault finding.

Select Your Category



About...

Hostname: metstream-100
MAC address: 00:1b:c5:0c:50:2a
IP address:
WLAN MAC address:
WLAN IP address:
Serial number: 13510008
Software build: 1.08-03

[Licence Agreements](#)

©2013 Gill Instruments Limited. Gill MetStream is a registered trademark of Gill Instruments.

www.gillinstruments.com

6.5.11 Thru Mode (Diagnostic Connection)

It is possible to communicate directly with a sensor attached to a MetStream using a terminal program, allowing you to view/log the raw sensor data in real time and if necessary re-configure the sensor.

NOTE: Data logging into the MetStream internal memory is DISABLED while Thru Mode is active.

Enable Thru Mode

Connect the sensor to MetStream and open the MetStream IP address GUI on a PC web browser as per examples in Paras 6.1 to 6.3.

Log in to Configuration screen and on the "Input Device Settings" check that is set to match the attached sensor (Auto for a MetPak). It is not necessary to setup the number of parameters or the fields. (If settings are changed it may be necessary to reload the page and log back into the configuration screen).

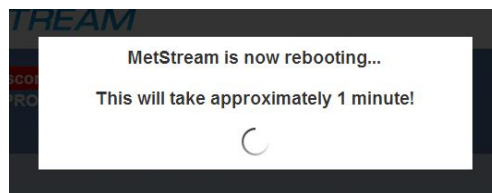
Click on the Network Settings Page which shows Thru Mode TCP Port Number e.g. 8023.

Click on the Enable Thru Mode button on the left hand side of the screen.

The following warning screen appears, Click on OK.

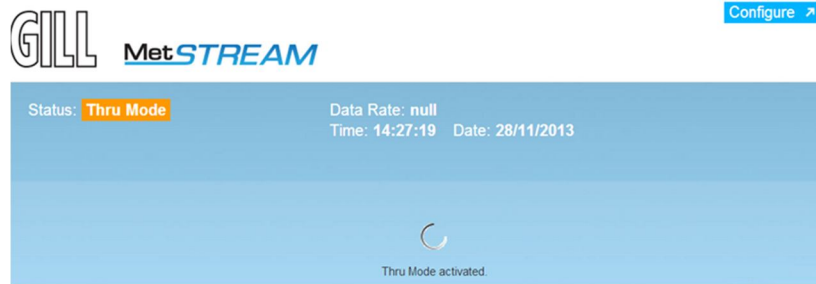
MetStream will now re-boot to enable Thru mode.

Note: The following warning screen does not warn when 1 minute is up; hence close the MetStream Web browser window after clicking on ok.



If required re-open the MetStream Web page e.g. 10.10.10.153 to confirm that Thru Mode has been enabled (see screen shot).

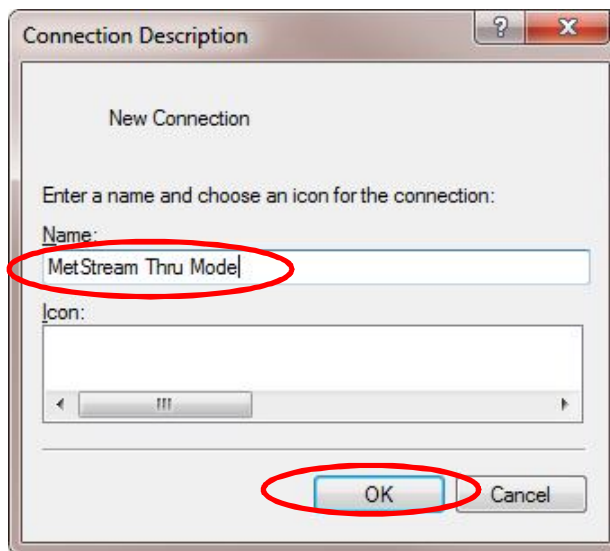
Close the Web Browser page connection.



Open a Telnet terminal programme e.g. HyperTerminal.

Type in a Name, e.g. MetStream Thru Mode.

Click on OK.

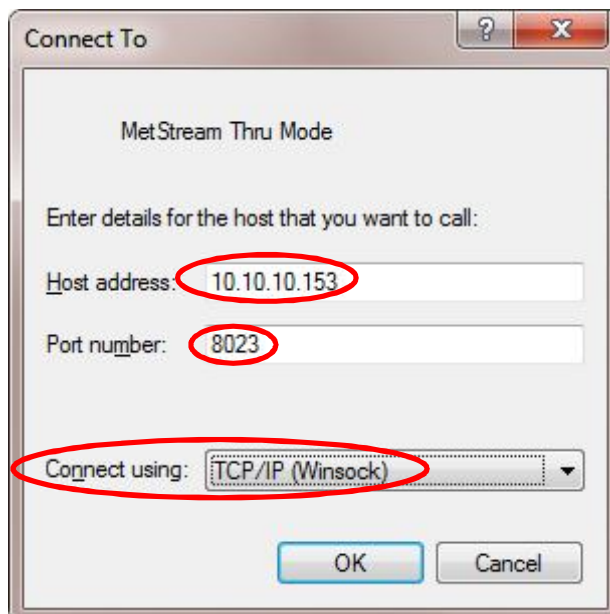


Type in the Host Address (MetStream IP address) for example 10.10.10.153

Type in the Port Number which for MetStream will be 8023.

Select Connect Using from the drop down list to be TCP/IP.

Click on OK.



Data should now be scrolling on the Hyperterminal screen updated at the connected instrument output rate (MetPak Pro data illustrated).

```

00,353,000.03,1006.1,045.0,+021.2,+008.8,+0003.5,+0002.5,0000.000,+12.0,00,4A
00,003,000.02,1006.1,044.9,+021.2,+008.8,+0003.5,+0002.5,0000.000,+12.0,00,45
00,351,000.03,1006.1,044.9,+021.2,+008.8,+0003.5,+0002.5,0000.000,+12.0,00,40
00,016,000.03,1006.1,044.9,+021.2,+008.8,+0003.5,+0002.5,0000.000,+12.0,00,40
00,017,000.02,1006.1,044.9,+021.2,+008.8,+0003.5,+0002.5,0000.000,+12.0,00,40
00,005,000.02,1006.1,044.9,+021.2,+008.8,+0003.5,+0002.5,0000.000,+12.0,00,43
00,343,000.01,1006.1,044.9,+021.2,+008.8,+0003.5,+0002.5,0000.000,+12.0,00,41

```

Should it be necessary to place the connected instrument into a Set Up mode/Configuration mode then send the necessary command (for Gill sensors this is the * command).

To interrogate the connected instrument:-

Type * to place the unit into Set up Mode (Enter key not needed).

The connected MetPak Pro unit has responded with SETUP MODE.

Refer to the connected Sensor Manual to determine which Configuration or Test commands are applicable for a terminal mode connection.

In this MetPak example the 'Report' command has been typed, the Enter key pressed and the unit has responded with the fields that it is reporting to MetStream.

Type Q and press Enter key to return to normal measurement mode.

```

00,337,000.03,1006.1,044.9,+021.2,+008.8,+0003.5,+0002.5,0000.000,+12.0,00,40
00,343,000.02,1006.1,044.9,+021.2,+008.8,+0003.5,+0002.5,0000.000,+12.0,00,42
00,001,000.03,1006.1,044.9,+021.2,+008.8,+0003.5,+0002.5,0000.000,+12.0,00,46
00,026,000.03,1006.1,044.9,+021.2,+008.8,+0003.5,+0002.5,0000.000,+12.0,00,43
00,019,000.03,1006.1,044.9,+021.2,+008.8,+0003.5,+0002.5,0000.000,+12.0,00,4F
00,014,000.03,1006.1,044.9,+021.2,+008.8,+0003.5,+0002.5,0000.000,+12.0,00,42
00,001,000.04,1006.1,044.9,+021.2,+008.8,+0003.5,+0002.5,0000.000,+12.0,00,41
00,013,000.04,1006.1,044.9,+021.2,+008.8,+0003.5,+0002.5,0000.000,+12.0,00,42
00,025,000.02,1006.1,044.9,+021.2,+008.8,+0003.5,+0002.5,0000.000,+12.0,00,41
00,020,000.03,1006.1,044.9,+021.2,+008.8,+0003.5,+0002.5,0000.000,+12.0,00,45
00,357,000.03,1006.1,044.9,+021.2,+008.8,+0003.5,+0002.5,0000.000,+12.0,00,46
00,349,000.04,1006.1,044.9,+021.2,+008.8,+0003.5,+0002.5,0000.000,+12.0,00,4E
00,006,000.05,1006.1,044.9,+021.2,+008.8,+0003.5,+0002.5,0000.000,+12.0,00,47
00,013,000.03,1006.1,044.9,+021.2,+008.8,+0003.5,+0002.5,0000.000,+12.0,00,45
00,359,000.03,1006.2,044.9,+021.2,+008.8,+0003.5,+0002.5,0000.000,+12.0,00,4B

SETUP MODE
> REPORT
REPORT = NODE, DIR, SPEED, PRESS, RH, TEMP, DEWPOINT, PRT, AN1, AN2, DIG1, VOLT, STATUS, CHECK
> Q
00,356,000.03,1006.2,045.1,+021.2,+008.8,+0003.5,+0002.5,0000.000,+12.0,00,4D
00,356,000.03,1006.2,045.2,+021.2,+008.8,+0003.5,+0002.5,0000.000,+12.0,00,4E

```

Logging Data

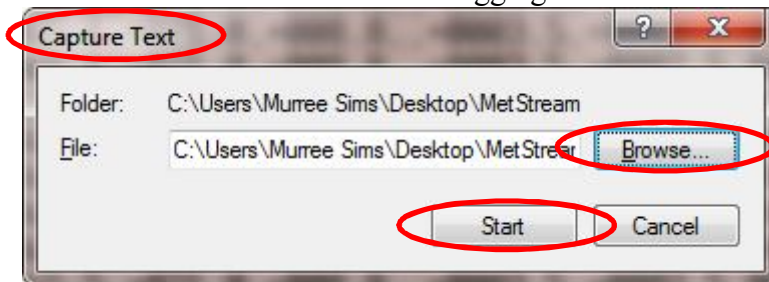
Hyperterminal can be used to log MetStream data (but note it will not add a Date/Time stamp to the data).

Start Logging

Select Transfer /Capture Text.

Then select Browse to choose a location/file on the PC to log the data.

Click on Start to commence data logging.

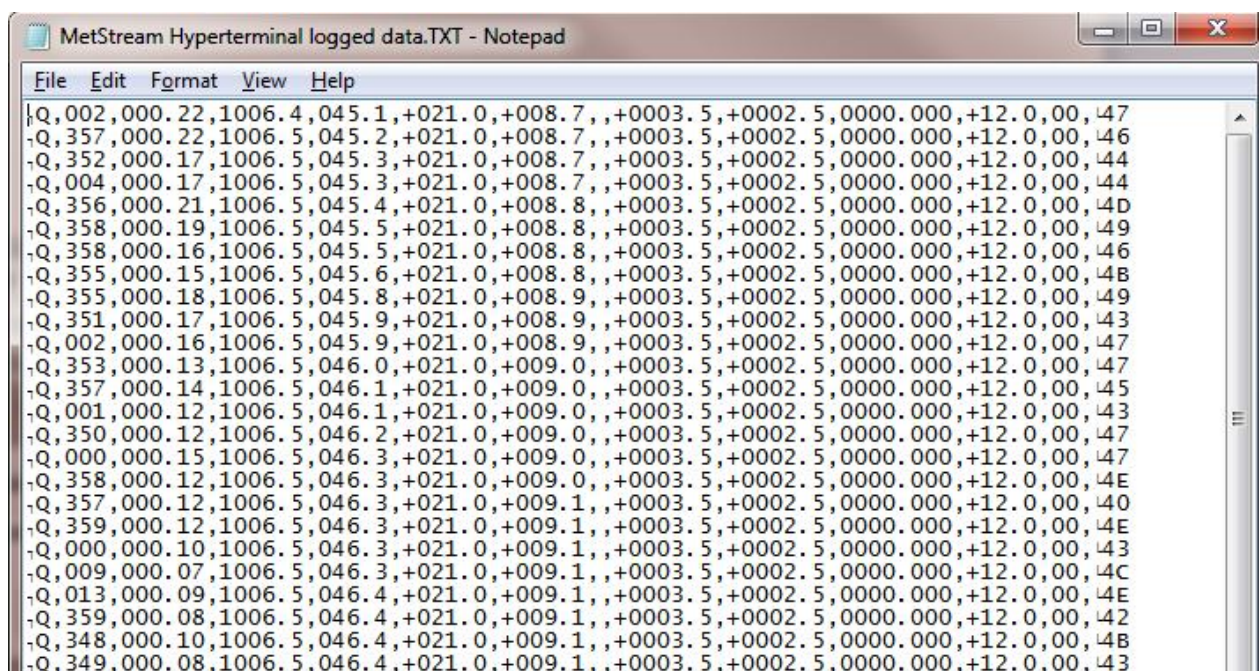


Stop Logging

Select Transfer/Capture Text/Stop.

Viewing Logged Data.

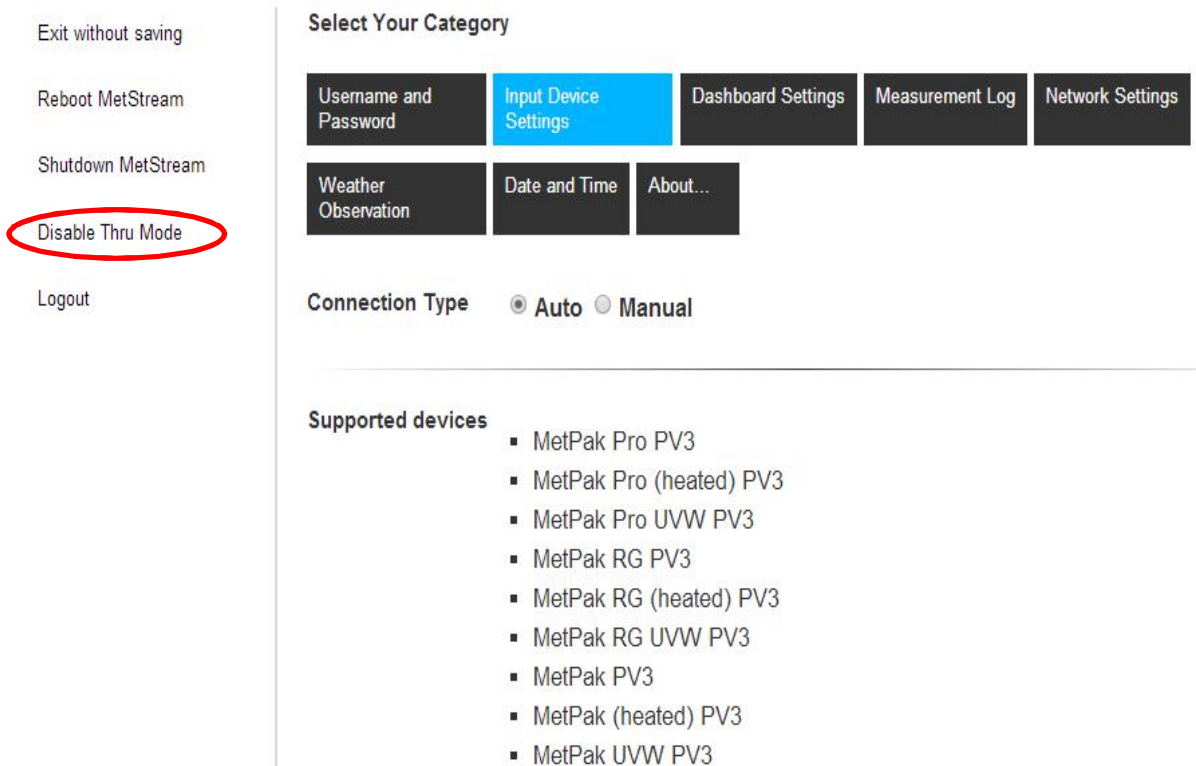
Open the saved data file location and view the text data e.g. using Notepad or similar.



Disable Thru Mode

With any terminal connection to MetStream closed, open the Web Browser page and Log-In to the Configure pages.

Click on Disable Thru Mode.



Exit without saving

Reboot MetStream

Shutdown MetStream

Disable Thru Mode

Logout

Select Your Category

Username and Password

Input Device Settings

Dashboard Settings

Measurement Log

Network Settings

Weather Observation

Date and Time

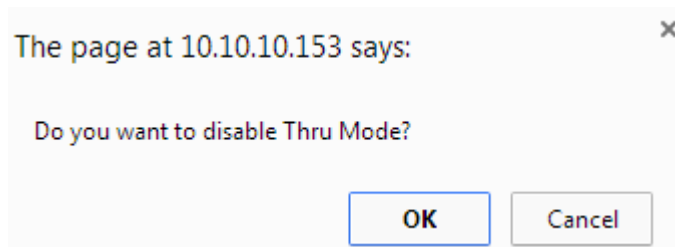
About...

Connection Type Auto Manual

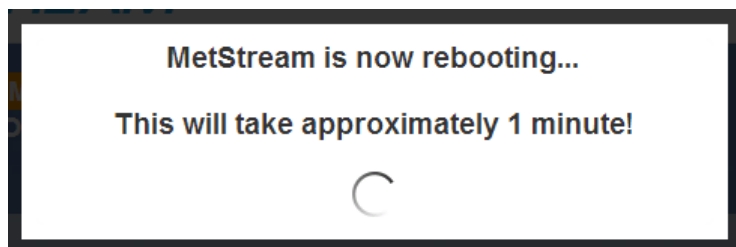
Supported devices

- MetPak Pro PV3
- MetPak Pro (heated) PV3
- MetPak Pro UVW PV3
- MetPak RG PV3
- MetPak RG (heated) PV3
- MetPak RG UVW PV3
- MetPak PV3
- MetPak (heated) PV3
- MetPak UVW PV3

Click on OK.



MetStream will now Re-Boot.



After 1 minute Refresh the Web Browser IP address page to view normal connected instrument data.

7. MAINTENANCE & FAULT-FINDING

7.1 Maintenance

There are no MetStream user-serviceable parts requiring routine maintenance.

Opening the unit will void the warranty.

In the event of failure, prior to returning the unit to your authorised Gill distributor, it is recommended that:

- All cables and connectors are checked for continuity, bad contacts, corrosion etc.
- Fault-finding checks are carried out as Para 7.2.
- Contact your supplier for advice if failure persists.

7.2 Fault-finding

To Support fault finding Gill Instruments Manuals can be downloaded from:-

<http://www.gillinstruments.com/data/manuals/manuals.htm>

Gill Instruments Software can be downloaded from:-

<http://www.gillinstruments.com/main/software.html>

Symptom	Action
Not able to open the GUI Display	<ul style="list-style-type: none"> • Check DC power is applied to the MetStream, the front panel Yellow LED should be constantly illuminated. • If the MetStream front panel Green LED is flashing then check the cabling between the connecting instrument and MetStream. • Check that there is a link between the MetStream 8 way connector terminals 6 (Power Enable) and 7 (0v). This supplies power to the connected instrument. • Check the MetStream Ethernet cable socket connection between MetStream the PC/Router/LAN. The Green LED should be constantly illuminated and the Yellow LED will flash showing data traffic. • Check that correct Ethernet cable type has been used (straight or crossover as appropriate). • Check that the correct IP address has been used. • Connect MetStream directly to a PC as detailed in Paras 6.1.1.or 6.1.2 and use IP address 192.168.67.67 to check MetStream operation and configuration.
Corrupted output	<ul style="list-style-type: none"> • Check cable lengths and type of cable. • Check connected instrument is installed as per its installation guidelines to avoid sources of interference.
MetStream GUI opens but does not display the connected instrument	<ul style="list-style-type: none"> • If the MetStream front panel Green LED is flashing then check the cabling between the connecting instrument and MetStream. • Check that there is a link between the MetStream 8 way connector terminals 6 (power Enable) and 7 (0v). • Is the unit set for Thru Mode? Disable Thru Mode. • Use Thru Mode to check communication with the connected sensor.
Incorrect GUI.	<ul style="list-style-type: none"> • Clear the Web Browser cache.

7.3 Returning Units

If the unit has to be returned, it should be carefully packed in the original packaging and returned to your authorised Gill distributor, with a full description of the fault condition.

Gill Instruments Distributors can be found at:-

http://www.gillinstruments.com/main/an_distributors.htm

The Return Maintenance Authorisation (RMA) procedure can be found at:-

<http://www.gillinstruments.com/products/anemometer/support.htm>

8. APPENDICES

8.1 Glossary & Abbreviations

Item	Meaning
BS	British Standard
CAT	Category
CD	Compact Disc
CFR	Code of Federal Regulations
CSV	Comma Separated Variable
DC	Direct Current
DHCP	Dynamic Name Host Protocol
DNS	Domain Name System
EC	European Community
EMC	Electro Magnetic Compatibility
EN	European Standard
FCC	Federal Communications Commission
GND	Ground
GUI	Graphical User Interface
IEEE	Institute of Electrical and Electronic Engineers
IP	Internet Protocol or Ingress Protection
LAN	Local Area Network
LED	Light Emitting Diode
MAC	Media Access Control
MAX	Maximum
MIN	Minimum
No.	Number
O/P	Output
NTP	Network Time Protocol
PC	Personal Computer
POE	Power over Ethernet
PTP	Precision Time Protocol
RJ	Registered Jack
RMA	Return Material Authorisation
RS232	Communications standard
RS422	Communications standard
RS485	Communications standard
RX	Receive
RXD	Received Data
SD	Secure Digital
STP	Shielded Twisted Pair
TCP	Transmission Control Protocol

Item	Meaning
TX	Transmit
TXD	Transmitted Data
TXT	Text
UL	Underwriters Laboratory
USB	Universal Serial Bus
UTP	Unshielded Twisted Pair
WLAN	Wireless Local Area Network
WOW	Weather Observation Website
+VE	Positive
-VE	Negative

8.2 Guarantee

For terms of guarantee contact your supplier.

Warranty is void if the black security seal covering MetStream box screws are damaged or broken.

8.3 Electrical Conformity

EC DECLARATION OF CONFORMITY ACCORDING TO COUNCIL DIRECTIVE 2004/108/EC



We, Gill Instruments Limited, declare our sole responsibility that the products:

MetStream 100

Manufactured by: Gill Instruments Limited
Saltmarsh Park
67 Gosport Street
Lymington, SO41 9EG

to which this declaration relates, are in conformity with the protection requirements of Council Directive 2004/108/EC on the approximation of the laws relating to electromagnetic compatibility.

This Declaration of Conformity is based upon compliance of the product with the following harmonized standards:

BS EN 55022:2010

BS EN 55024:2010

Emissions Using BS EN 61000

Immunity Using BS EN 61000

Signed by

A handwritten signature in black ink that reads "A.C.R. Stickland".

A.C.R. Stickland – Director

Date of issue: 29/11/2013

Place of issue: Gill Instruments Limited
Saltmarsh Park
67 Gosport Street
Lymington, SO41 9EG

